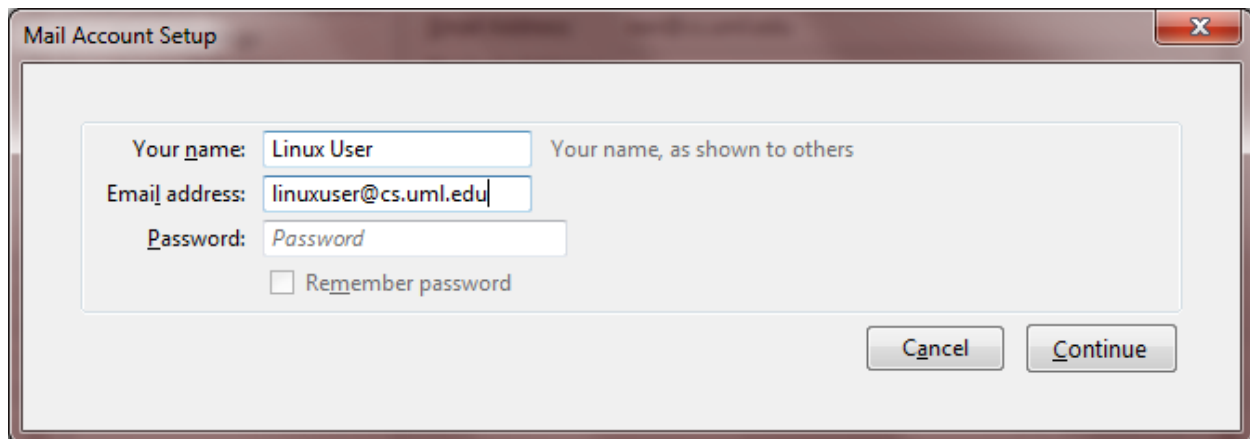


Using the CS Mail Server with Thunderbird for POP access

If you are starting Thunderbird for the first time on a computer, a user account creation wizard will start. If you already have Thunderbird configured for another email account, go to Tools/Account Settings and under Account Actions, choose 'Add Mail Account' to start the setup wizard.

When the wizard starts, type in your name, cs email address (i.e. linuxusername@cs.uml.edu) but not your password, select **Continue**.



Mail Account Setup

Your name: Linux User Your name, as shown to others

Email address: linuxuser@cs.uml.edu

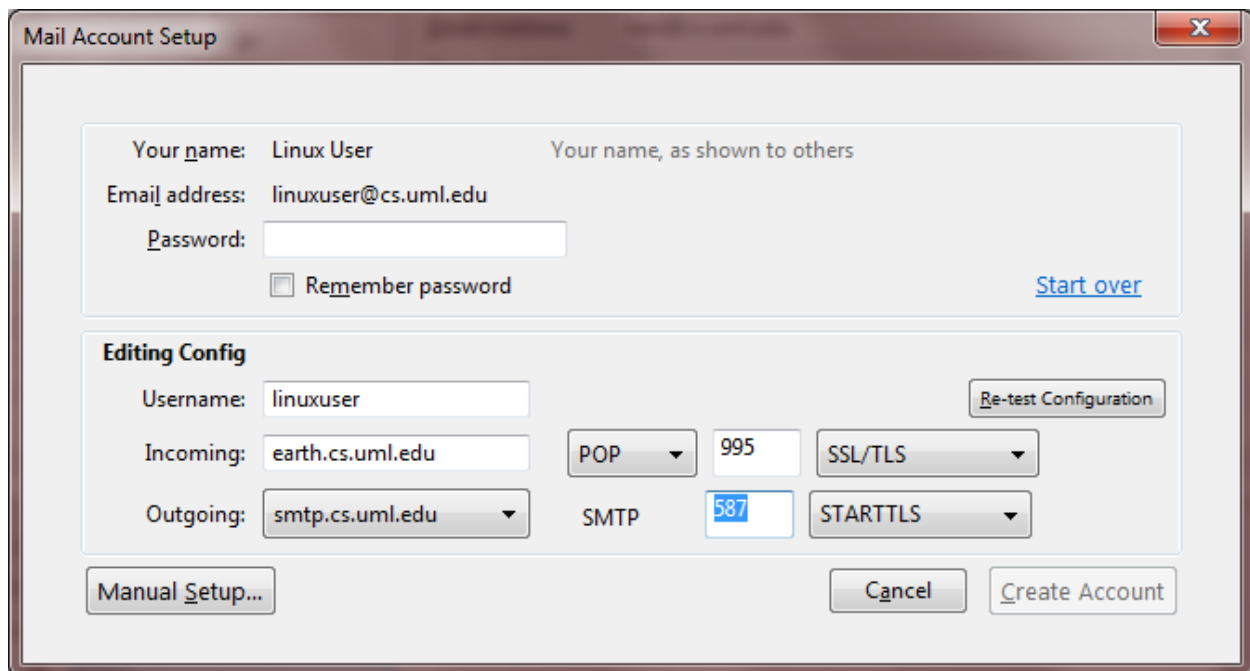
Password: Password

Remember password

Cancel Continue

On the next screen, click on 'Stop' to stop Thunderbird from auto-configuring.

Set the **Incoming**: to earth.cs.uml.edu, select POP, change the port number to 995 and select SSL/TLS. Set the **Outgoing**: to smtp.cs.uml.edu, change the port number to 587 and select STARTTLS.



Mail Account Setup

Your name: Linux User Your name, as shown to others

Email address: linuxuser@cs.uml.edu

Password:

Remember password [Start over](#)

Editing Config

Username: linuxuser [Re-test Configuration](#)

Incoming: earth.cs.uml.edu POP 995 SSL/TLS

Outgoing: smtp.cs.uml.edu SMTP 587 STARTTLS

Manual Setup... Cancel Create Account

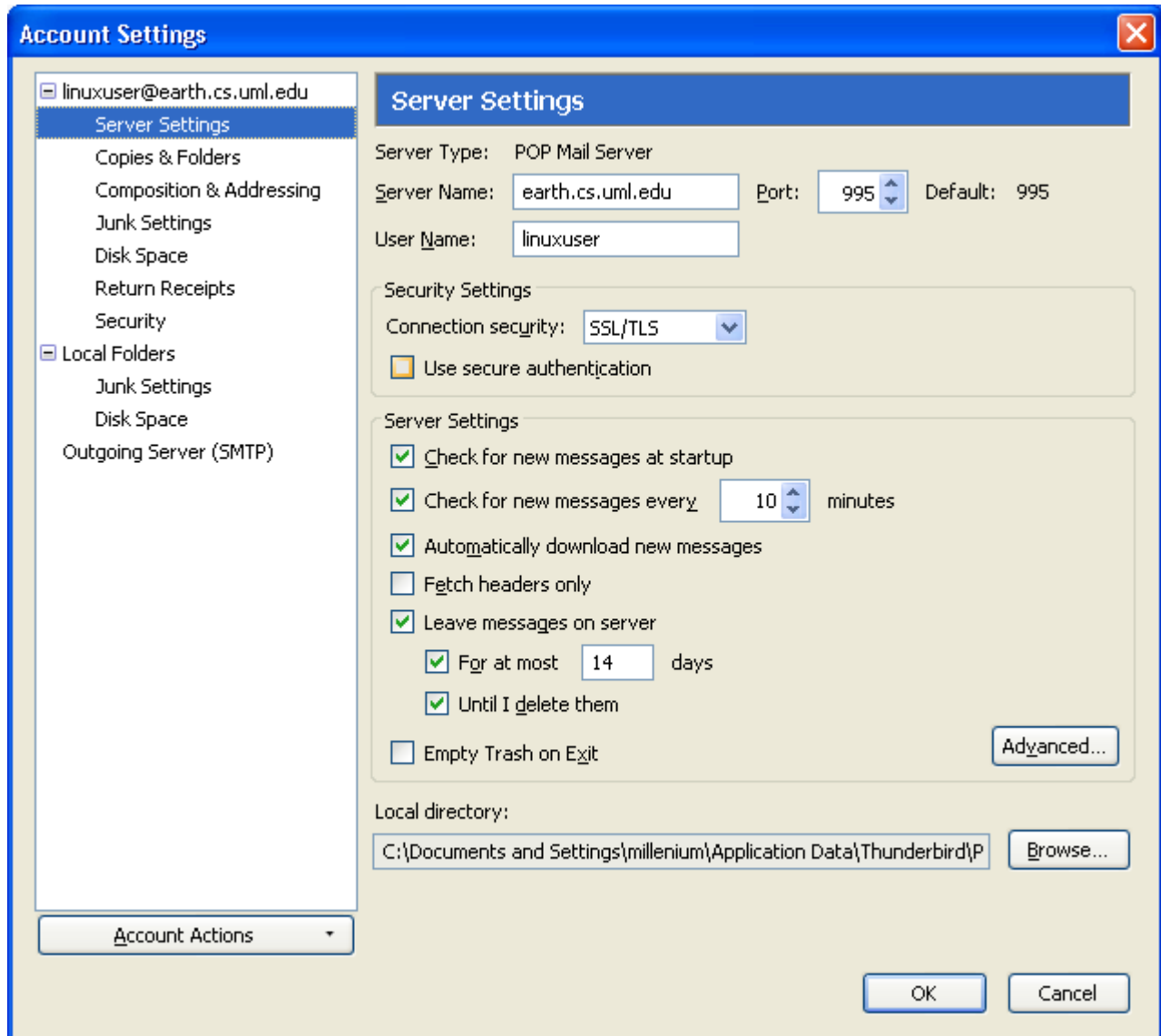
Click **Manual Setup**.

Confirm the settings as follows:

Server settings

Server Name: earth.cs.uml.edu

Connection Security: SSL/TLS (will change Port to 995)



Do not click OK yet, see next page

Click on **Outgoing Server (SMTP)** and confirm these settings:

Server Name: earth.cs.uml.edu

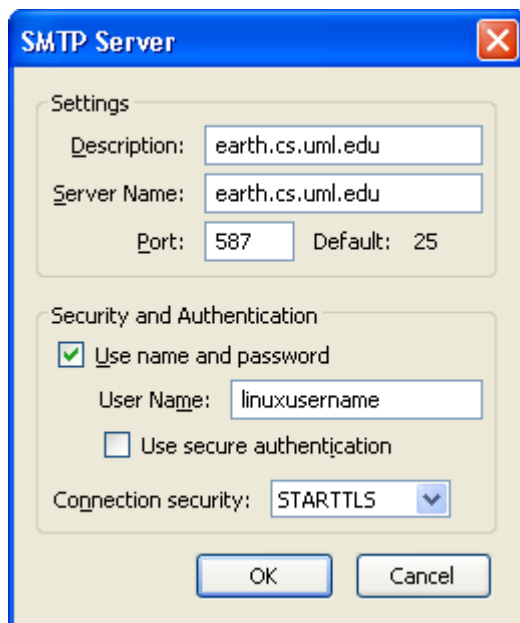
Port: 587

Select 'User name and Password'

Input your username next to User Name:

DO NOT select 'Use secure authentication'

Set Connection security: STARTTLS



The image shows a screenshot of a Windows dialog box titled "SMTP Server". The dialog box is divided into two main sections: "Settings" and "Security and Authentication".

Settings:

- Description: earth.cs.uml.edu
- Server Name: earth.cs.uml.edu
- Port: 587 (Default: 25)

Security and Authentication:

- Use name and password
- User Name: linuxusername
- Use secure authentication
- Connection security: STARTTLS (dropdown menu)

At the bottom of the dialog box, there are two buttons: "OK" and "Cancel".