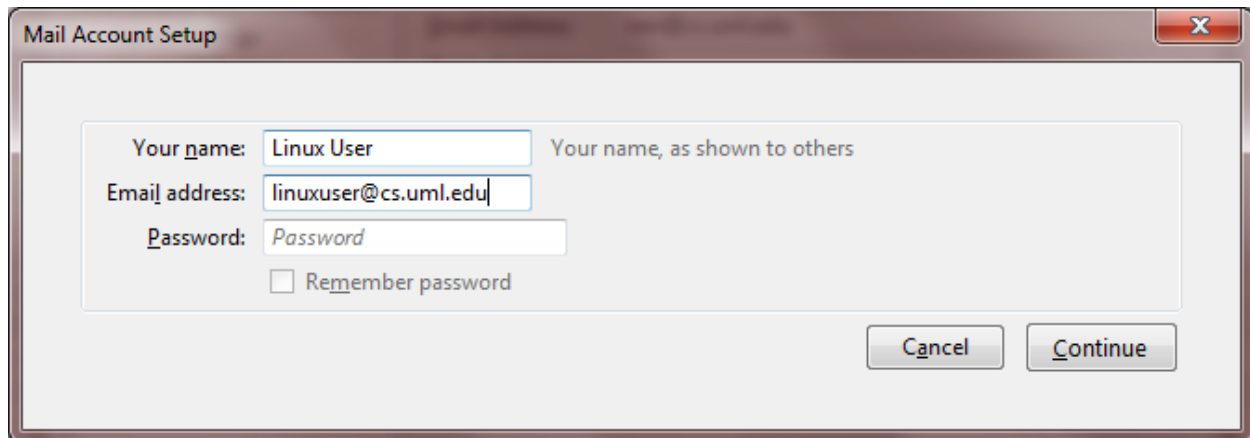


Using the CS Mail Server with Thunderbird for IMAP access

If you are starting Thunderbird for the first time on a computer, a user account creation wizard will start. If you already have Thunderbird configured for another email account, go to Tools/Account Settings and under Account Actions, choose 'Add Mail Account' to start the setup wizard.

When the wizard starts, type in your name, cs email address (i.e. linuxusername@cs.uml.edu) but not your password, select **Continue**.



Mail Account Setup

Your name: Linux User Your name, as shown to others

Email address: linuxuser@cs.uml.edu

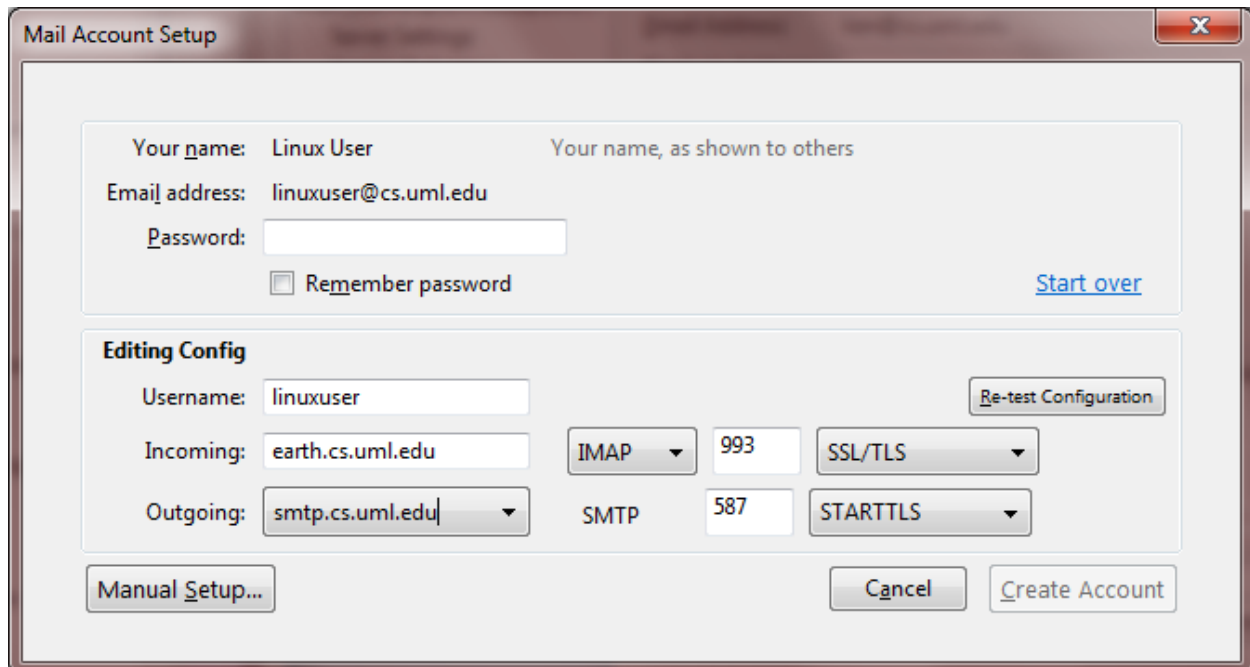
Password: Password

Remember password

Cancel Continue

On the next screen, click on 'Stop' to stop Thunderbird from auto-configuring itself.

Set the **Incoming**: to earth.cs.uml.edu, select IMAP, change the port number to 993 and select SSL/TLS. Set the **Outgoing**: to smtp.cs.uml.edu, change the port number to 587 and select STARTTLS.



Mail Account Setup

Your name: Linux User Your name, as shown to others

Email address: linuxuser@cs.uml.edu

Password:

Remember password [Start over](#)

Editing Config

Username: linuxuser [Re-test Configuration](#)

Incoming: earth.cs.uml.edu IMAP 993 SSL/TLS

Outgoing: smtp.cs.uml.edu SMTP 587 STARTTLS

Manual Setup... Cancel Create Account

Click **Manual Setup**.

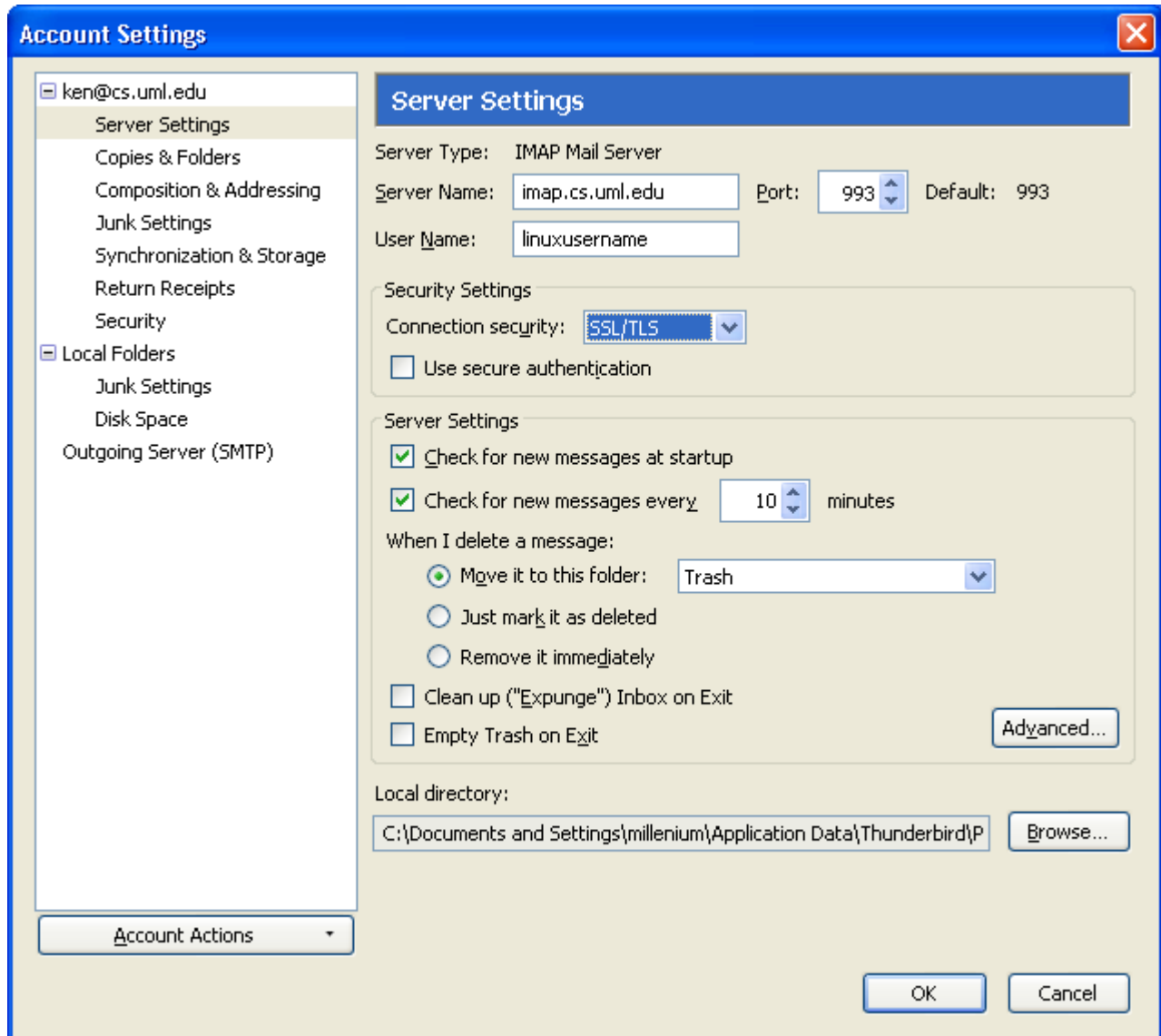
Confirm the settings as follows:

Server settings

Server Name: imap.cs.uml.edu

Connection Security: SSL/TLS (will change Port to 993)

DO NOT select Use secure authentication



Do not click OK yet, see next page

Select **Outgoing Server (SMTP) settings** and confirm these settings:

Server Name: earth.cs.uml.edu

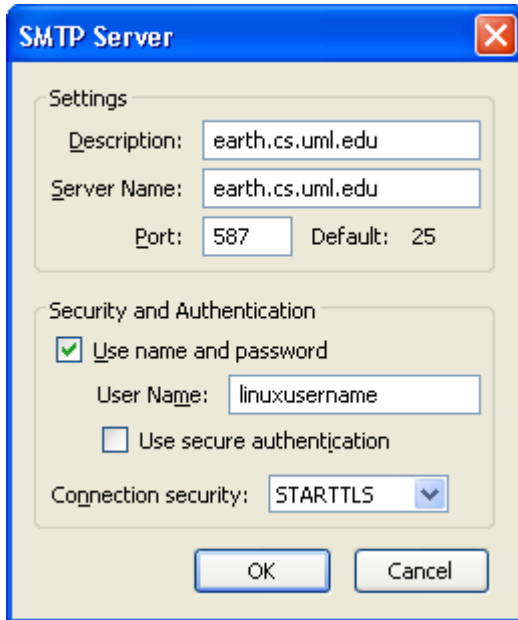
Port: 587

Select 'User name and Password'

Input your username next to User Name:

DO NOT select 'Use secure authentication'

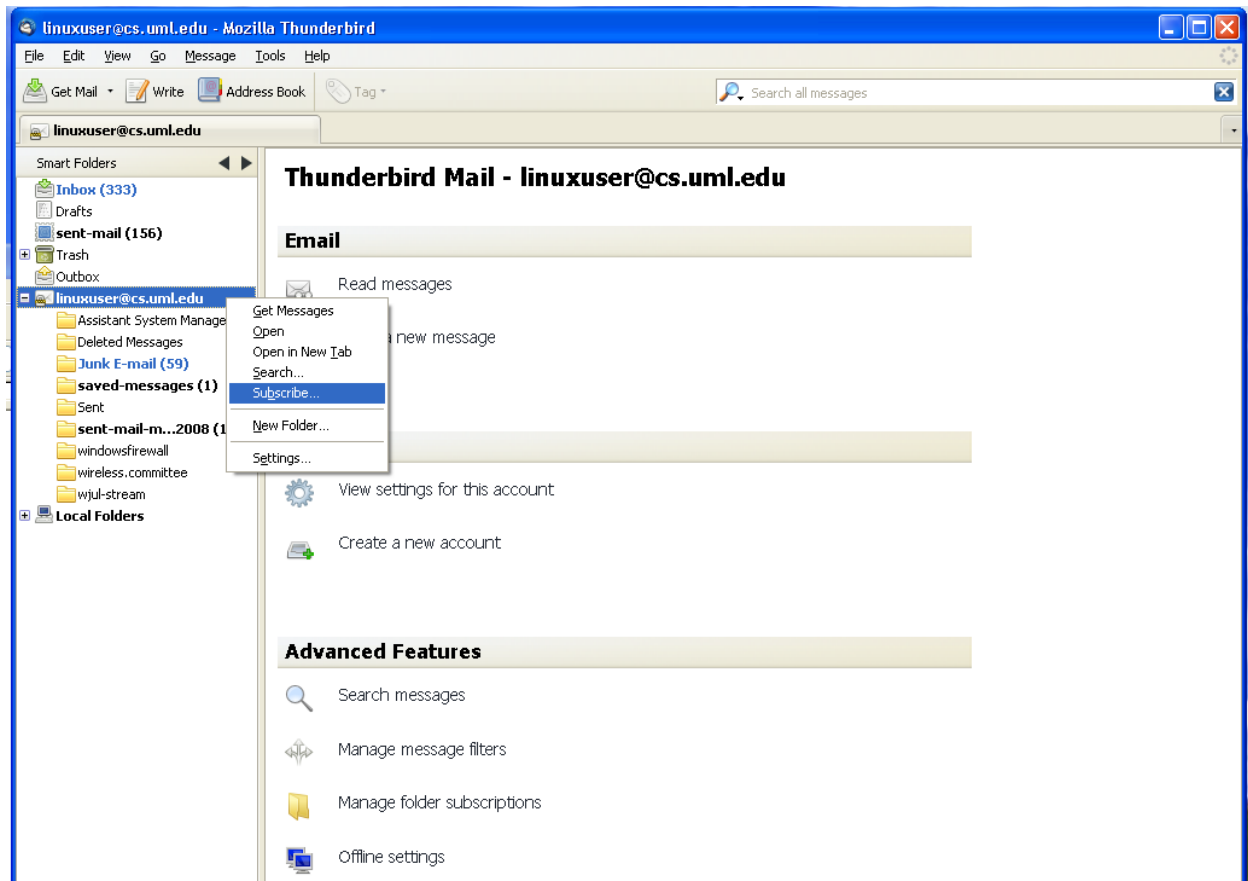
Set Connection security: STARTTLS



The image shows a screenshot of the 'SMTP Server' settings dialog box. The dialog has a blue title bar with the text 'SMTP Server' and a close button. It is divided into two main sections: 'Settings' and 'Security and Authentication'. In the 'Settings' section, there are three text input fields: 'Description' containing 'earth.cs.uml.edu', 'Server Name' containing 'earth.cs.uml.edu', and 'Port' containing '587'. The 'Default' port is listed as '25'. In the 'Security and Authentication' section, there is a checked checkbox for 'Use name and password' and an unchecked checkbox for 'Use secure authentication'. Below these is a 'User Name' input field containing 'linuxusername'. At the bottom of this section is a 'Connection security' dropdown menu set to 'STARTTLS'. At the very bottom of the dialog are 'OK' and 'Cancel' buttons.

To see the IMAP folders stored under the ~/mail directory in your linux home directory:

Right click on the 'linuxuser@cs.uml.edu' entry in the Folder window pane of Thunderbird, and select 'Subscribe'



Select the folders you'd like to see, and click on **Subscribe**

To **Create** a new folder, right click on the 'linuxuser@cs.uml.edu' entry in the Folder window pane of Thunderbird, and select '**New Folder**'.

Remember to subscribe to it as directed above (you may need to choose 'Refresh' in the Subscribe window before it is visible).