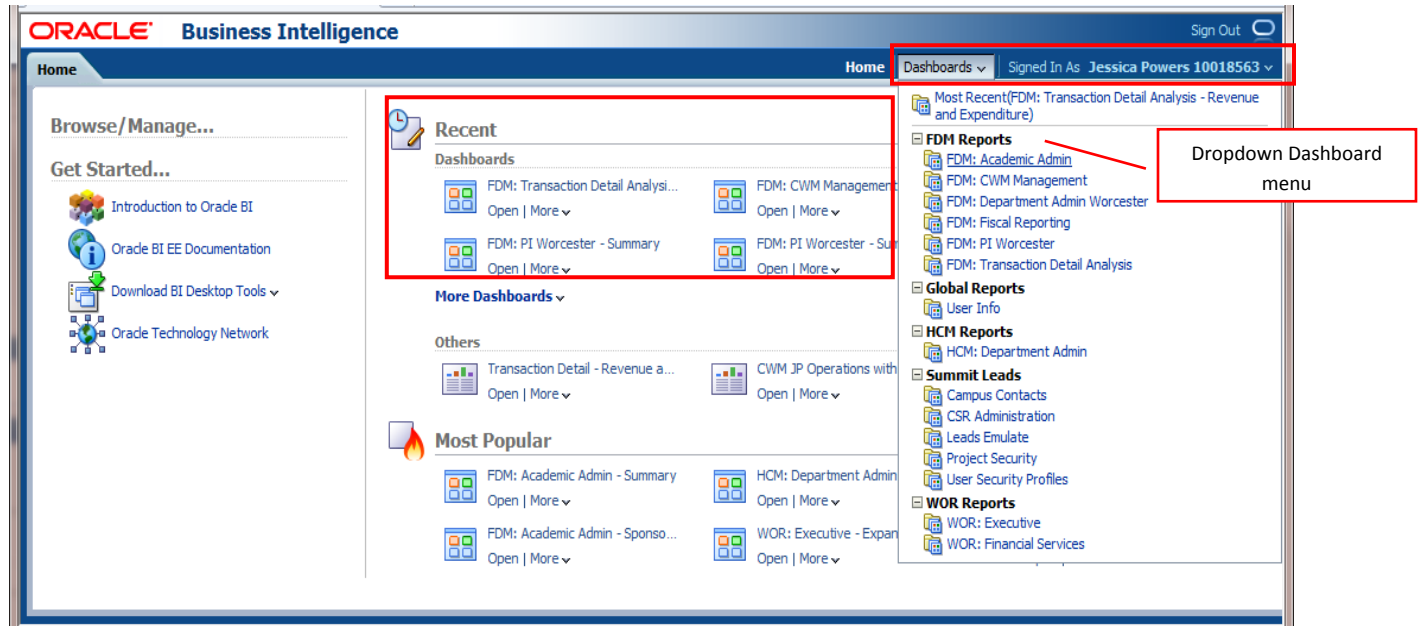


Setting a Default Dashboard

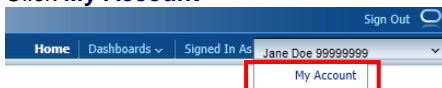
When you first sign into Summit, you will see the Home Page which displays your most recent dashboards and most popular recommendations. You will also see your User Information and a dropdown Dashboard menu.



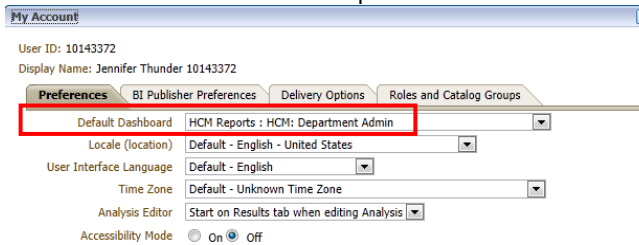
Setting a Dashboard as the Home Page Default

To save your most commonly used Dashboard and bypass the Home Page, follow the steps below.

1. Click the arrow dropdown next to your user name at top right of page
2. Click **My Account**



3. Click the **Default Dashboard** dropdown list in the Preferences section.



4. Select the **Dashboard** you want to default on your home page.
5. Click the **OK** button at the bottom of the **My Account** page.
6. You will need to log out, close your browser, and then log back in so your home page can refresh with your new default settings.