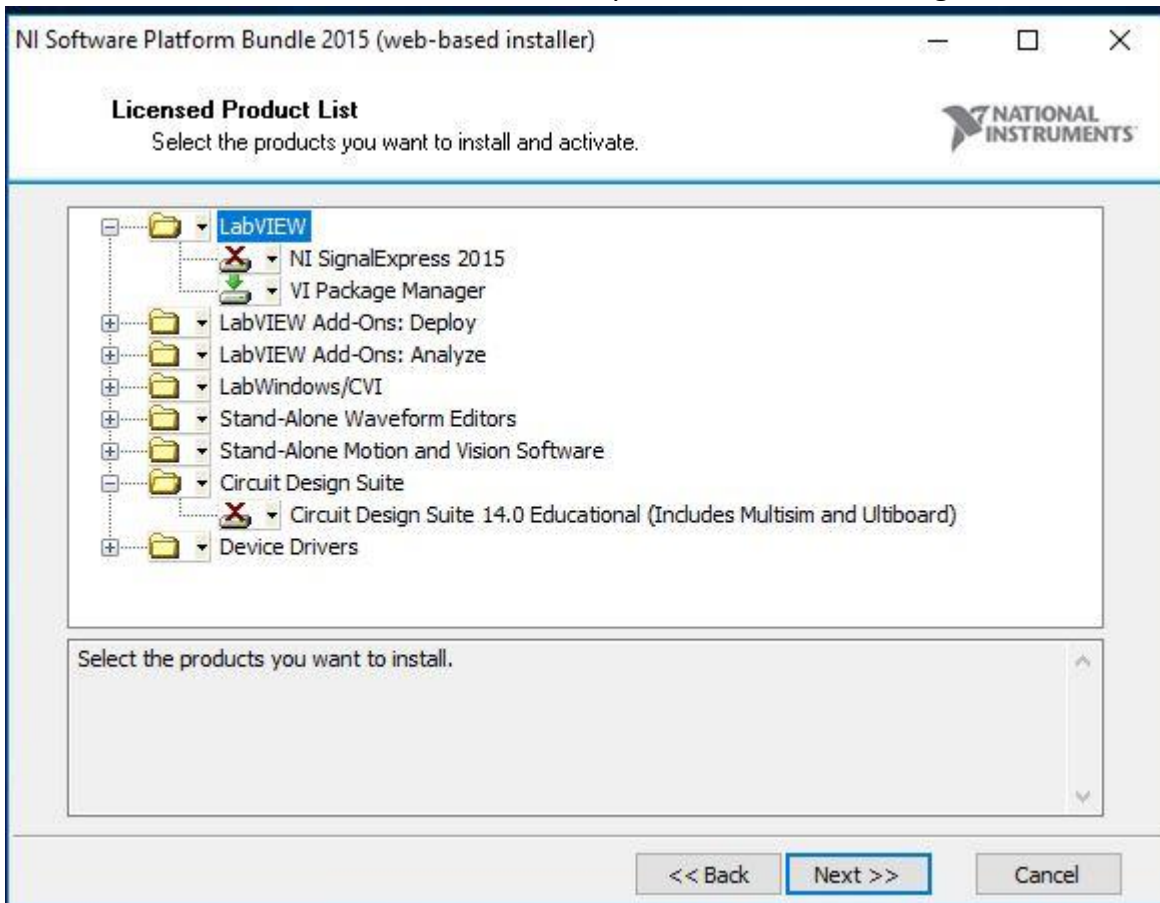


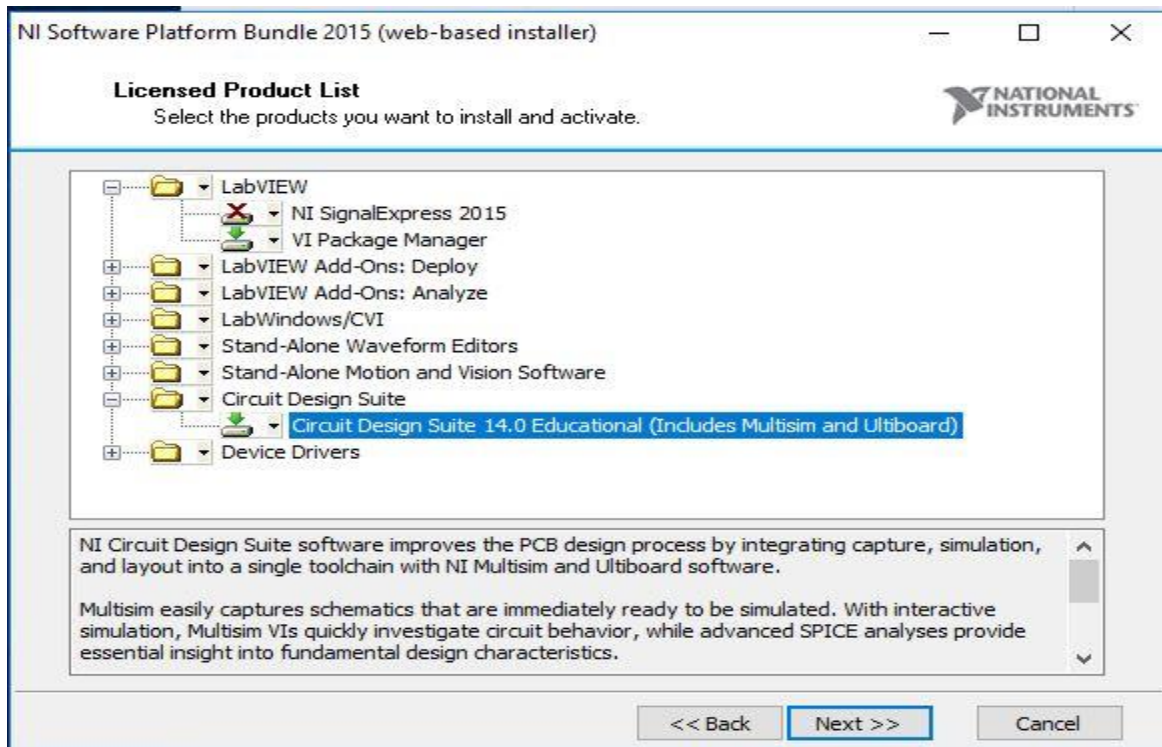
Labview Install Instructions

****NOTE** You will need an active internet connection and a National Instruments Account to install this software. You may get this account by following these instructions below or going to National Instruments directly.**

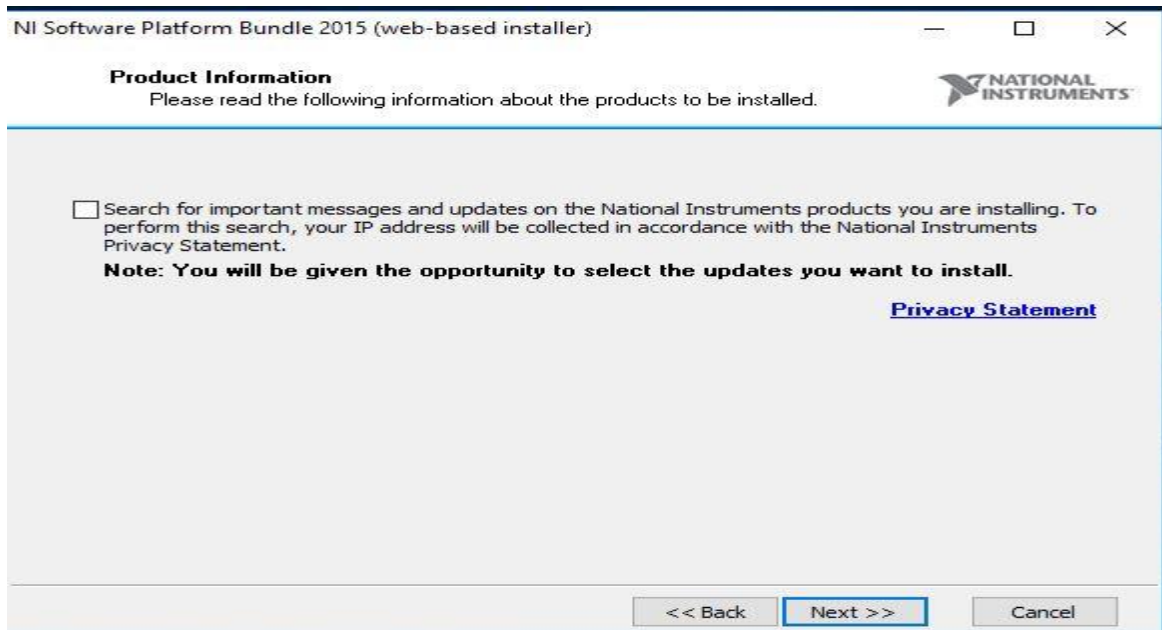
- 1.) Start the labview install.
- 2.) Keep default download directory and hit start.
- 3.) Hit next.
- 4.) Keep **“I want to install software now”** hit next.
- 5.) Keep **“I have serial number”** and **“select and activate products”** hit next
- 6.) Put in serial number and hit **“Add Serial Number Button”** then hit next
- 7.) You will come to the screen below. Make sure you click on **“Circuit Design Suite 14.0”**



8.) After you click on the above it should look like the picture below. Then click next.



9.) Uncheck search for important messages and updates and then click next.



- 10.) Keep “**Destination Directory**” and hit next.
- 11.) Click on “**Accept the above license agreements**” and hit next
- 12.) Click on “**Accept the above license agreements**” and hit next (this is done twice)
- 13.) On Disable windows fast start keep default and click next.
- 14.) You will then be shown a login account screen *****Although you can, DO NOT bypass this screen by deferring activation or your software will not run*****
- 15.) At this point you can either log into your account and active the machine or you can create an account by clicking on “**create and account**” and come back to this screen.

NI Software Platform Bundle 2015 (web-based installer)

Activate Your Products
Complete the following information.

NATIONAL INSTRUMENTS

An NI User Account is required to activate our product. This enables NI to better deliver benefits associated with software maintenance and support programs.

Log in to your NI User Account

Email

Password

[Forgot your password?](#)

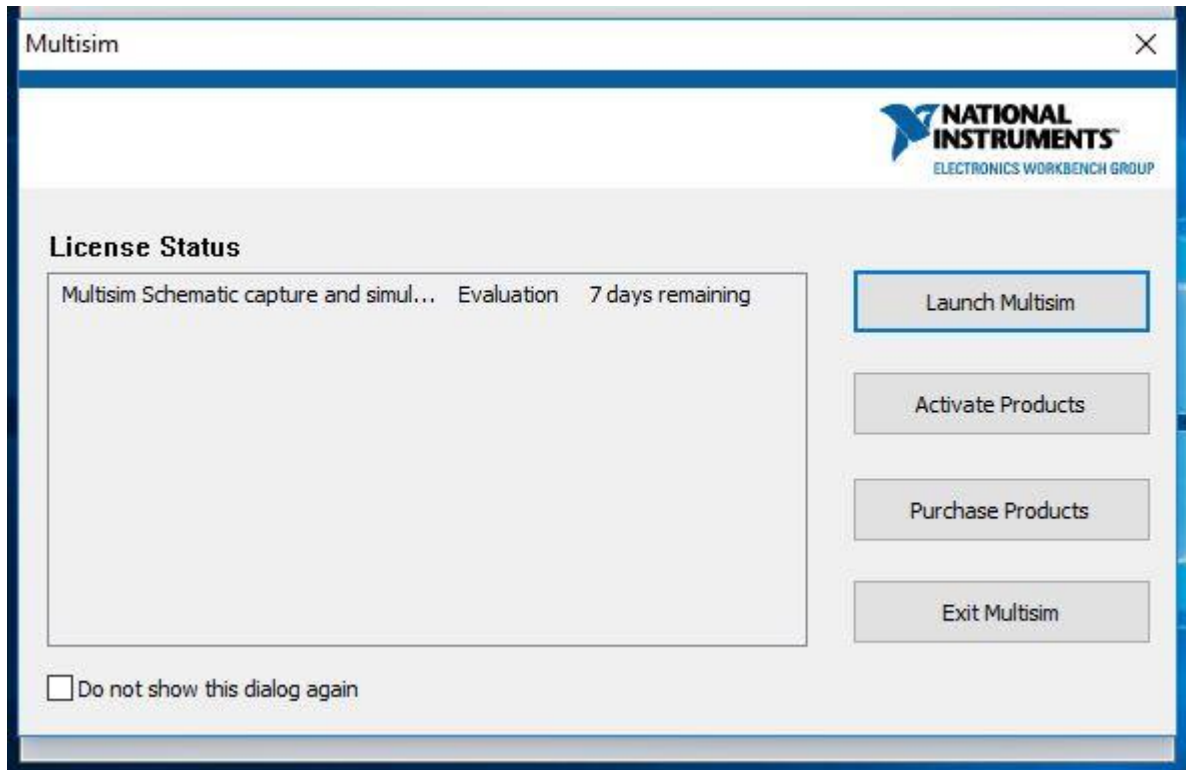
[Create a new Account](#)

I am not the end user. Defer activation until product launch or invocation of NI License Manager.

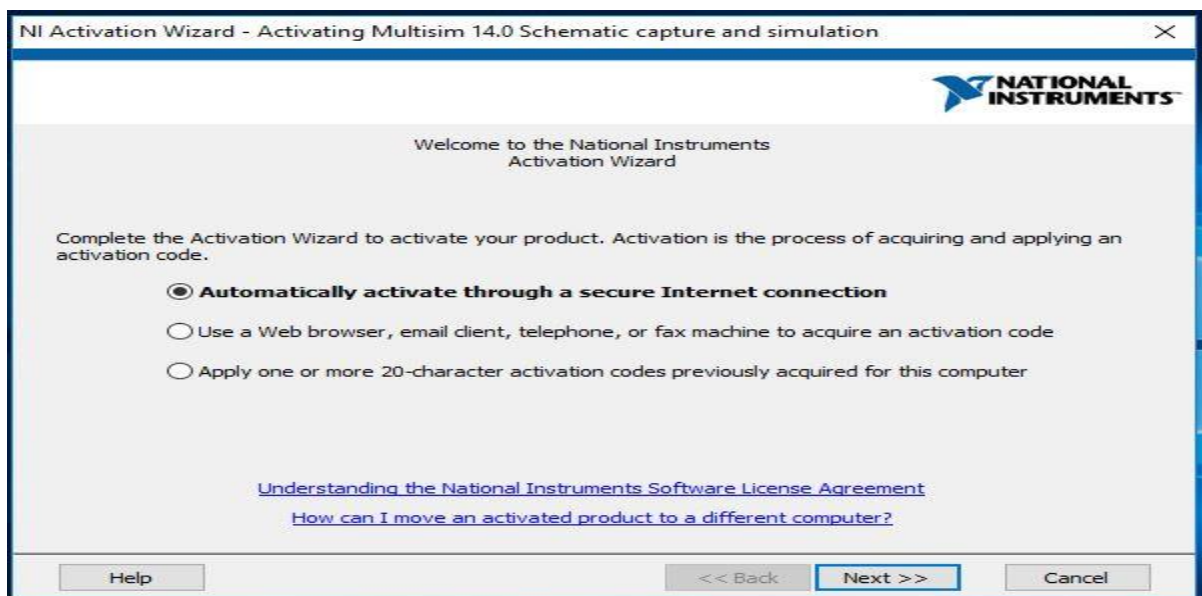
<< Back Next >> Cancel

- 16.) At the start download and install screen hit next to install software.

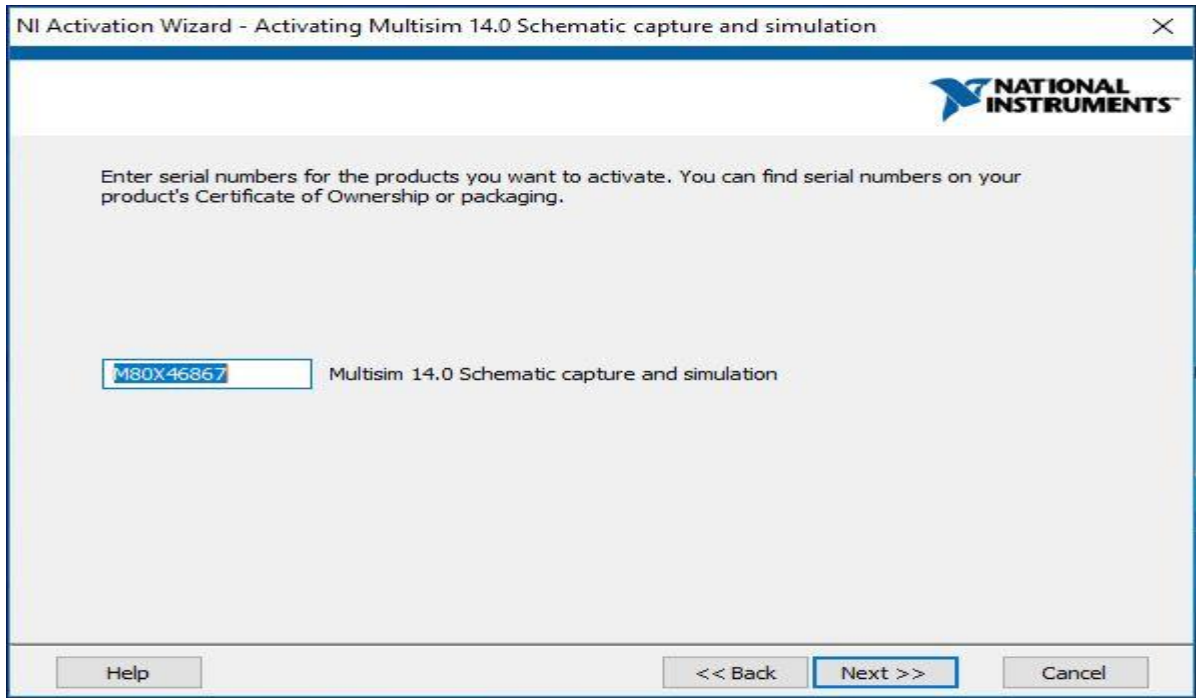
- 17.) At this point if you did not create an account as instructed in #15, you will see the screen below. You will have 7 days until the software stops working and you are forced to create an account with National Instruments. **Click on Activation.**



- 18.) Keep the default and hit next.



19.) Put in your serial number you got from the IT web site.



NI Activation Wizard - Activating Multisim 14.0 Schematic capture and simulation

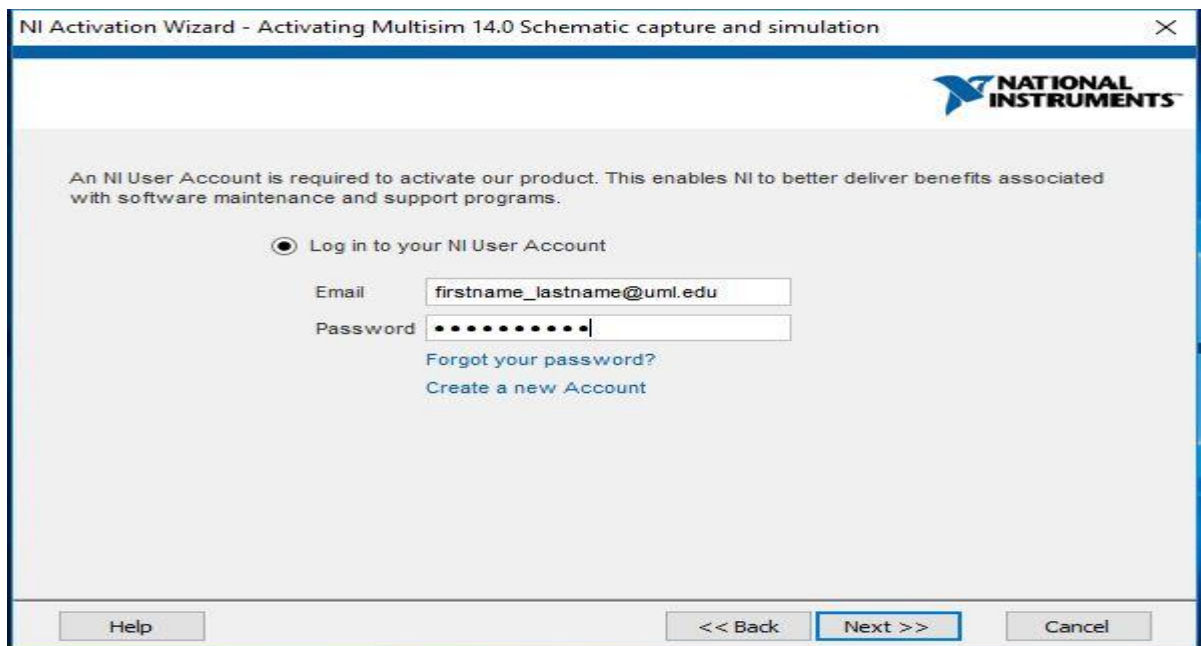
NATIONAL INSTRUMENTS

Enter serial numbers for the products you want to activate. You can find serial numbers on your product's Certificate of Ownership or packaging.

M80X46867 Multisim 14.0 Schematic capture and simulation

Help << Back Next >> Cancel

20.) Log in with the account you created at the National Instruments site.



NI Activation Wizard - Activating Multisim 14.0 Schematic capture and simulation

NATIONAL INSTRUMENTS

An NI User Account is required to activate our product. This enables NI to better deliver benefits associated with software maintenance and support programs.

Log in to your NI User Account

Email

Password

[Forgot your password?](#)

[Create a new Account](#)

Help << Back Next >> Cancel

- 21.) Keep default at "I'm the end user of this product" and hit next.
- 22.) You should now see this screen and you are done. Hit Finished.

