

Configuring MAC OS X Mail application for CS POP Mail Server access

The 'Add Account' wizard may run automatically when you first run the Mail app.

To run the Add Account wizard if you already have configured Mail for another account:

Open up the Mail application

Select Preferences under the Mail menu (on top of screen)

Click on the Accounts icon on top of the window

Click on the + symbol on the bottom left corner of the Accounts window

In the preceding 'Add Account' window, fill in your name and email address

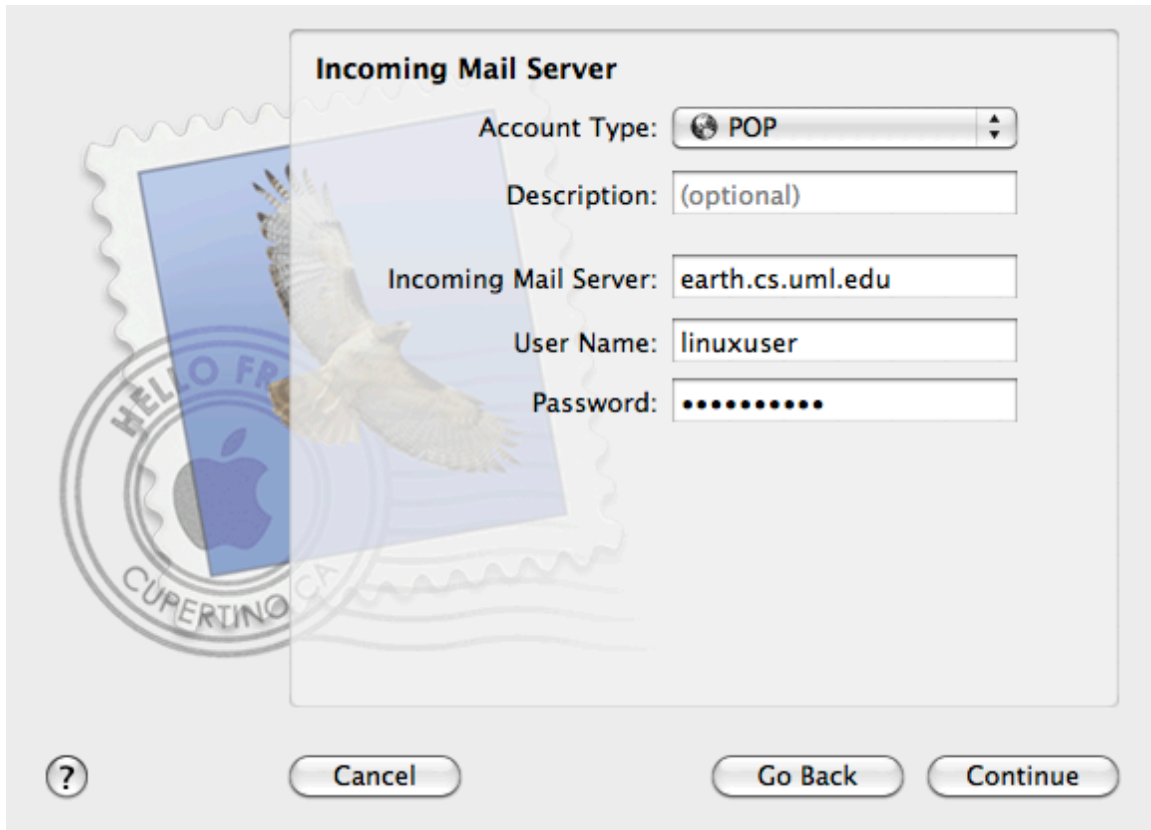
(username@cs.uml.edu) and select Continue.



Set **Account Type** to POP

Set **Incoming Mail Server** to earth.cs.uml.edu

Put your linux username next to **User Name:**
Put your linux password next to **Password:**
Select **Continue**
If you get an access error, just select **Continue**.



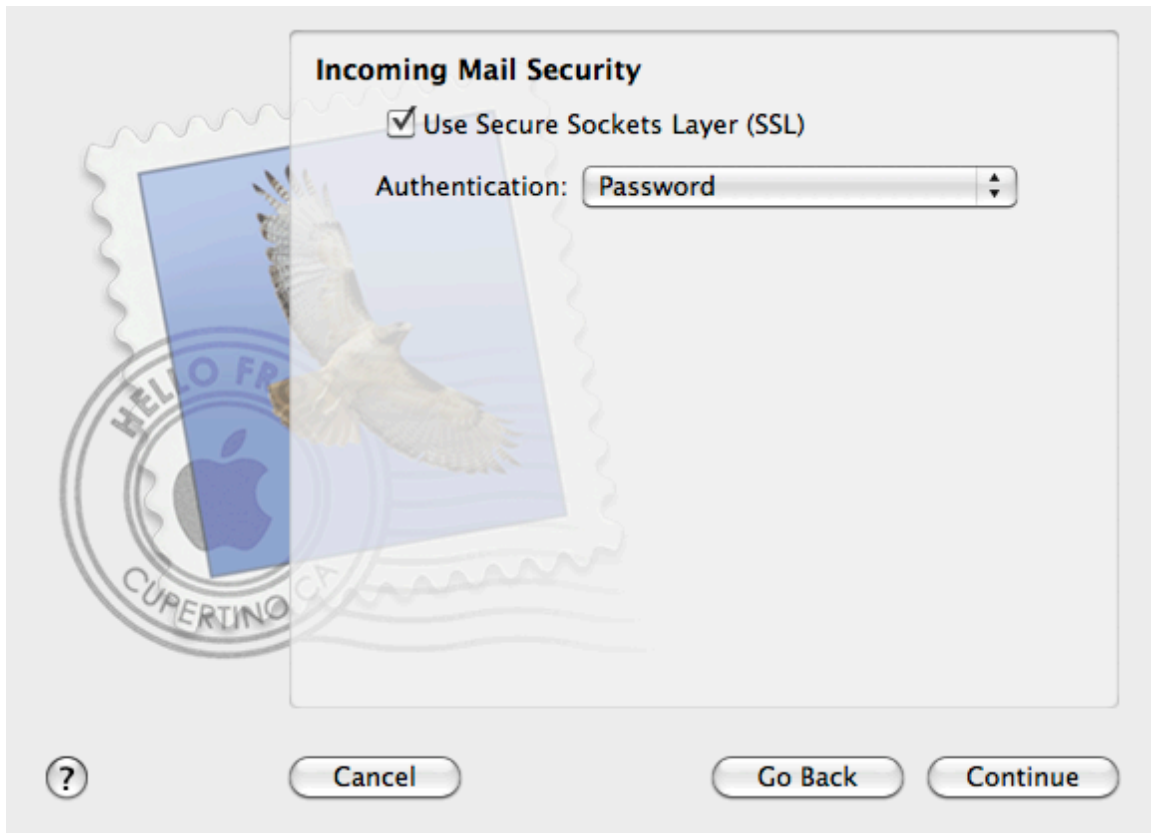
The image shows a dialog box titled "Incoming Mail Server" with a background of a postage stamp featuring a white dove and the text "HELLO FROM CUPERTINO CA" around an Apple logo. The dialog box contains the following fields and controls:

- Account Type:** A dropdown menu set to "POP".
- Description:** A text field containing "(optional)".
- Incoming Mail Server:** A text field containing "earth.cs.uml.edu".
- User Name:** A text field containing "linuxuser".
- Password:** A text field containing ten black dots.

At the bottom of the dialog box, there are four buttons: a help button (a question mark in a circle), a "Cancel" button, a "Go Back" button, and a "Continue" button.

Check off **Use Secure Sockets Layer (SSL)**
Set **Authentication** to Password

Select **Continue**



For **Outgoing Mail Server**, type in earth.cs.uml.edu.
Check off **Use Authentication**
Specify your CS **User Name** and **Password** in the proper fields

Select **Continue**

Outgoing Mail Server

Description:

Outgoing Mail Server: ▼

Use only this server

Use Authentication

User Name:

Password:

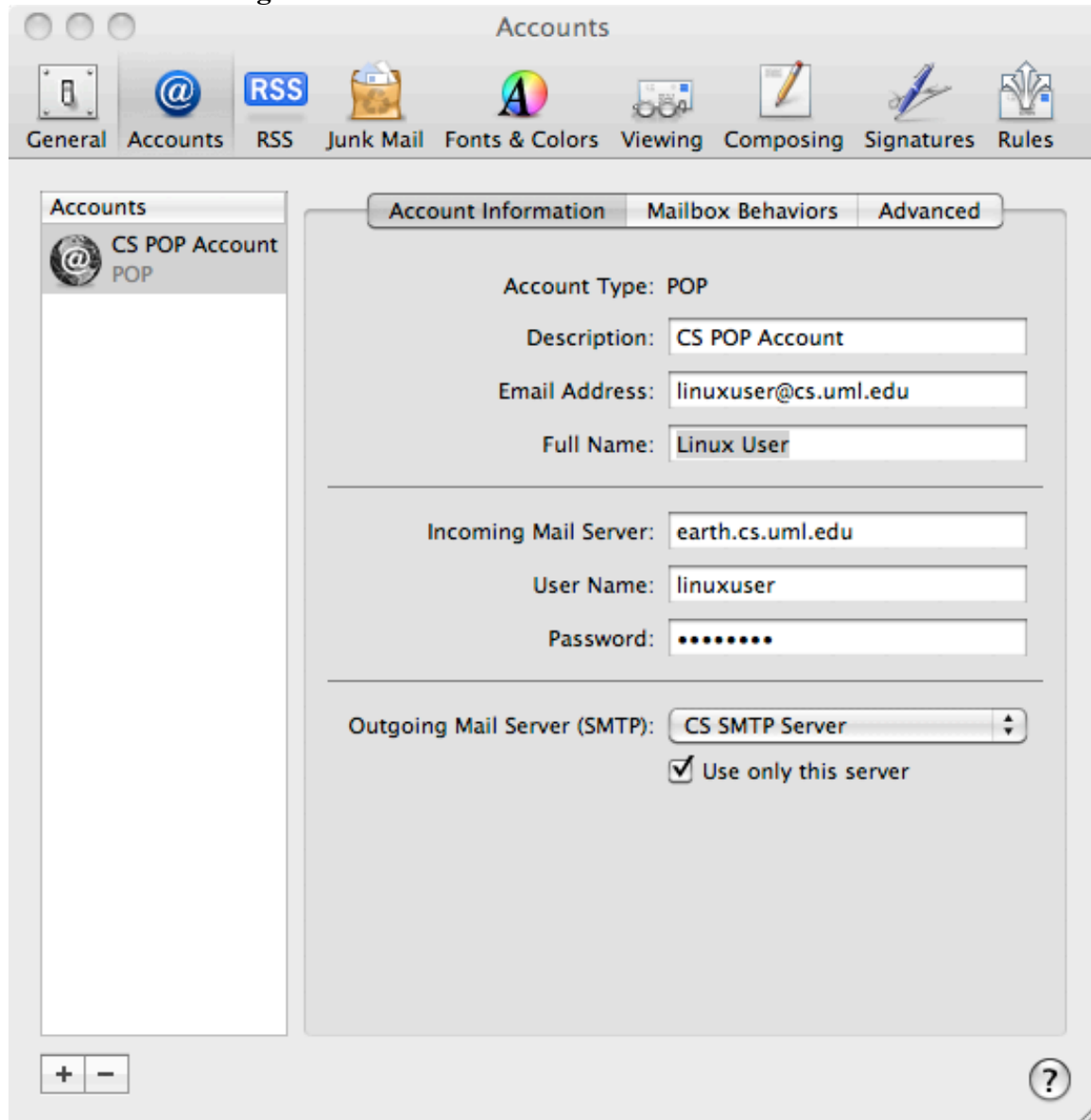
? Cancel Go Back Continue

Once this Mail account instance is created via this wizard, things should work properly.
If there are problems reading or sending mail, follow these steps to ensure the settings are correct:

Open up the Mail application

Select Preferences under the Mail menu (on top of screen)
Click on the Accounts icon on top of the window
Select the CS Mail Server instance on the left of the window

Ensure that **Incoming Mail Server** is set to earth.cs.uml.edu

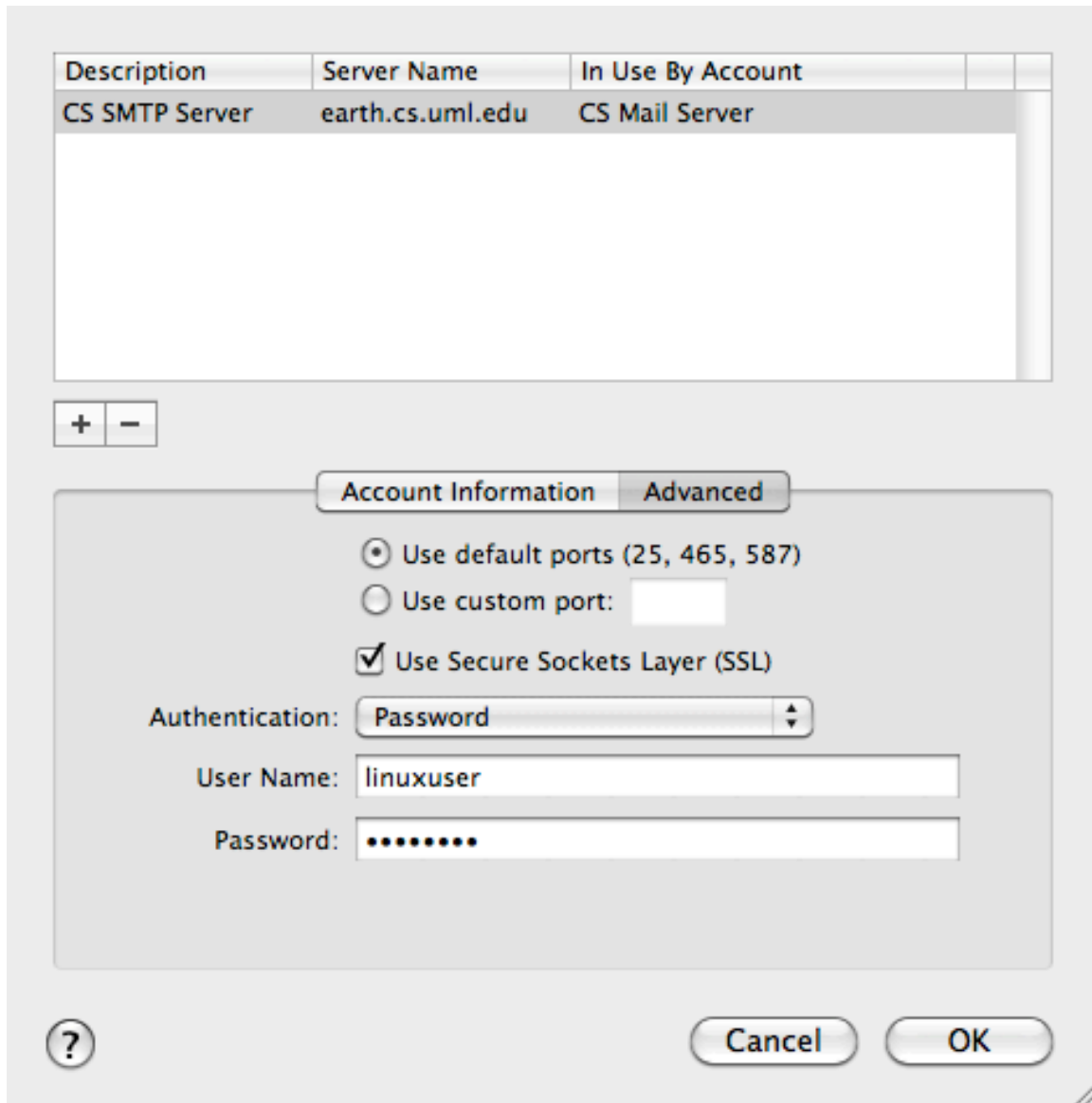


Select the drop down menu next to **Outgoing Mail Server (SMTP)** and choose 'Edit SMTP Server List'

Click on the CS SMTP Server entry, and confirm these settings:

Use default ports (25, 465, 587)

Use Secure Sockets Layer (SSL)
Authentication = Password
Your linux username and password
Click OK



On the **Advanced** tab, confirm these settings:

Port: 995

Use SSL is checked

Authentication: Password

If you intend on reading the emails from multiple computers, change the setting under

Remove copy from server after retrieving a message to the longest time possible.

