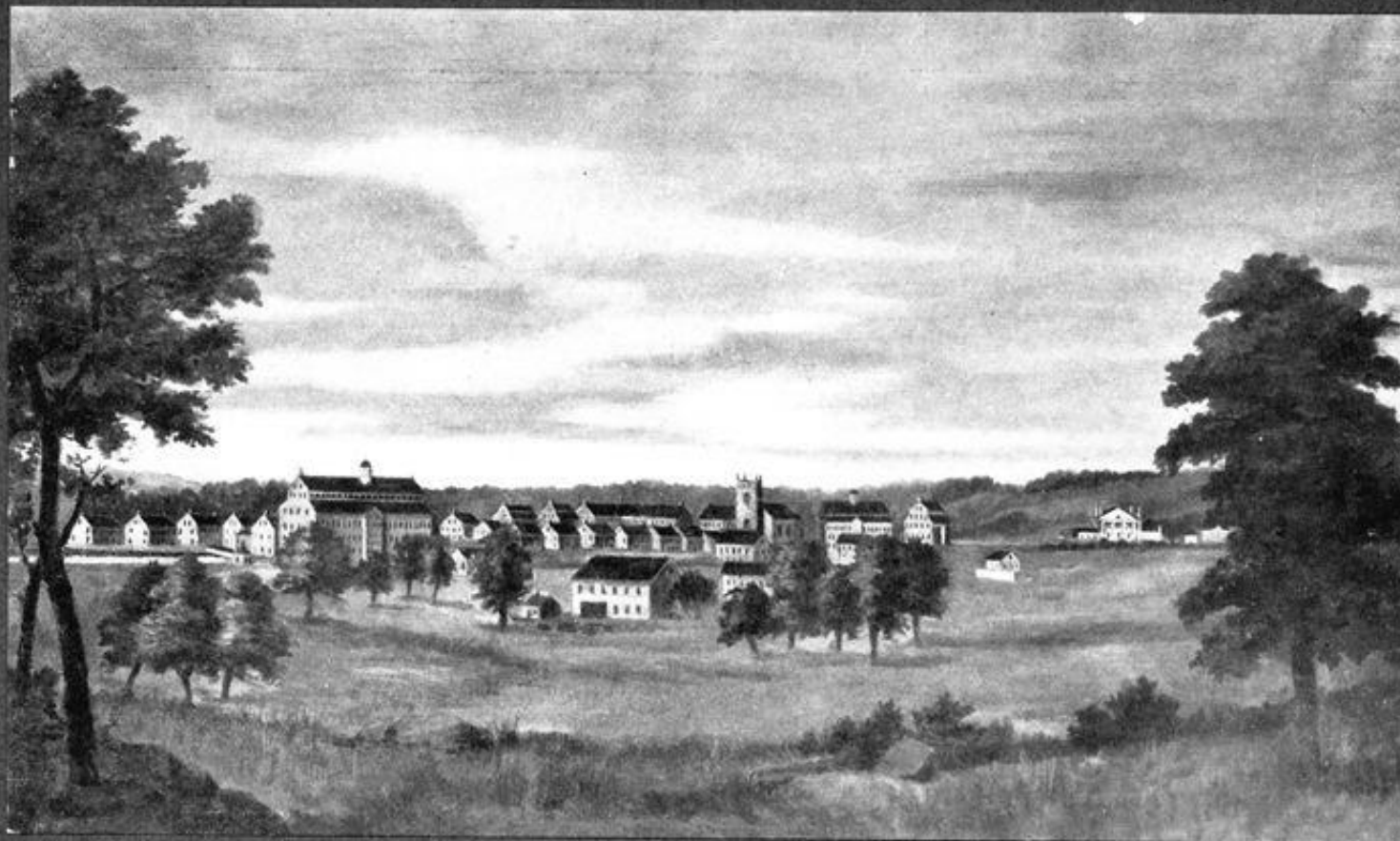


II. Lowell and Belvidere Village - 1832 - by Benjamin Mather



FIRST BIRDSEYE VIEW OF LOWELL

(FROM A PAINTING BY JOHN I. COGGESHALL)

“First Birdseye View of Lowell,” c. 1825, Lowell Historical Society collection



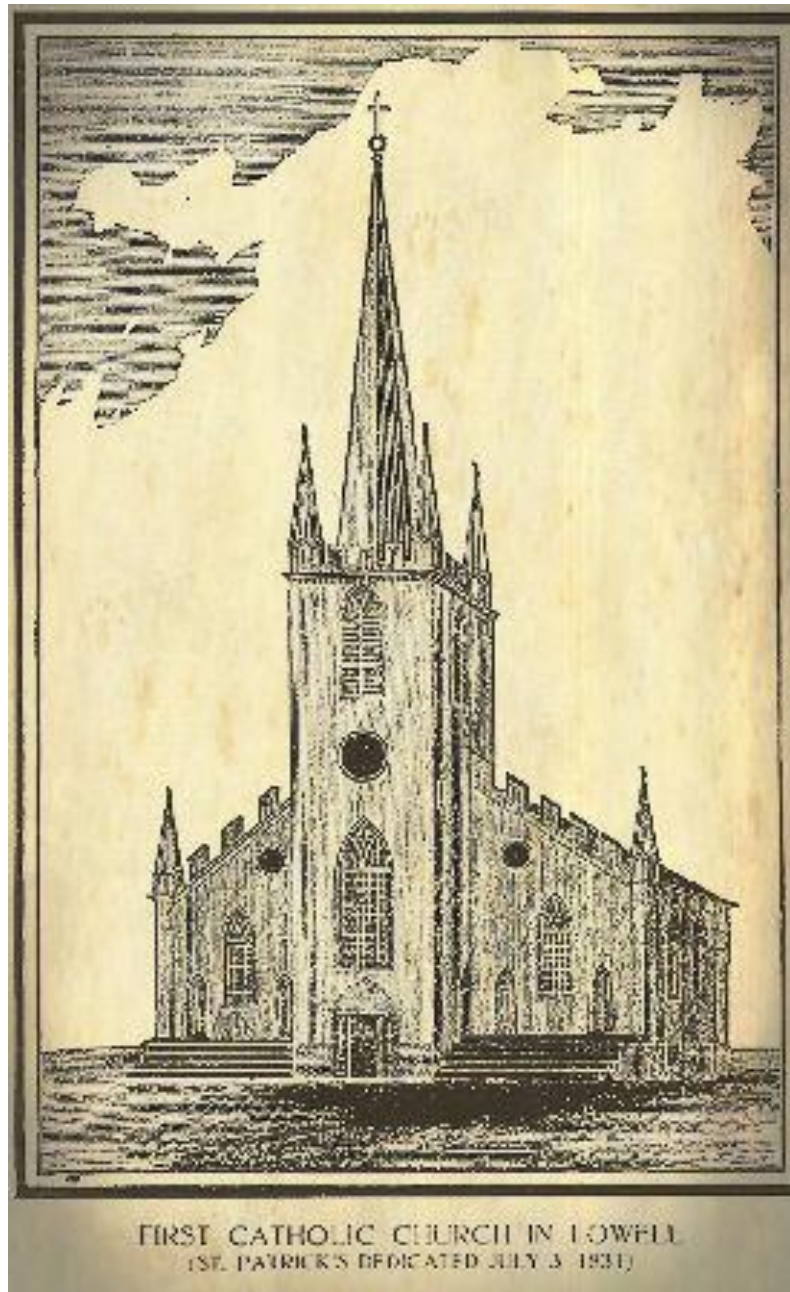
Drawn by J. W. Barber—Engraved by E. L. Barber, New Haven, Conn.

EAST VIEW OF LOWELL, MASS.

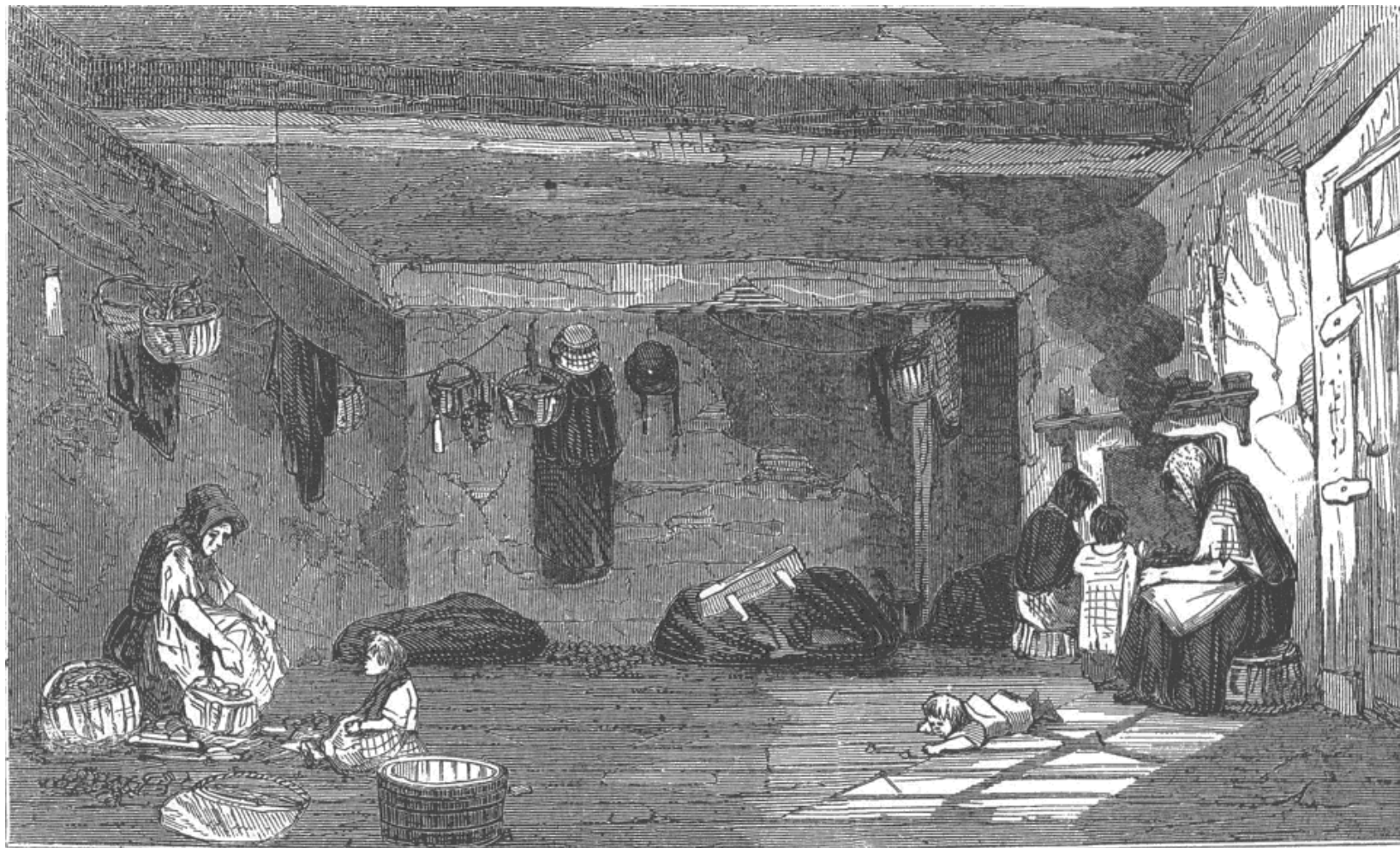
The above is an eastern view of the central part of Lowell as seen from the elevated ground on the Dracut or northern side of Merrimac river. The entrance of Concord river into the Merrimac is seen on the left.



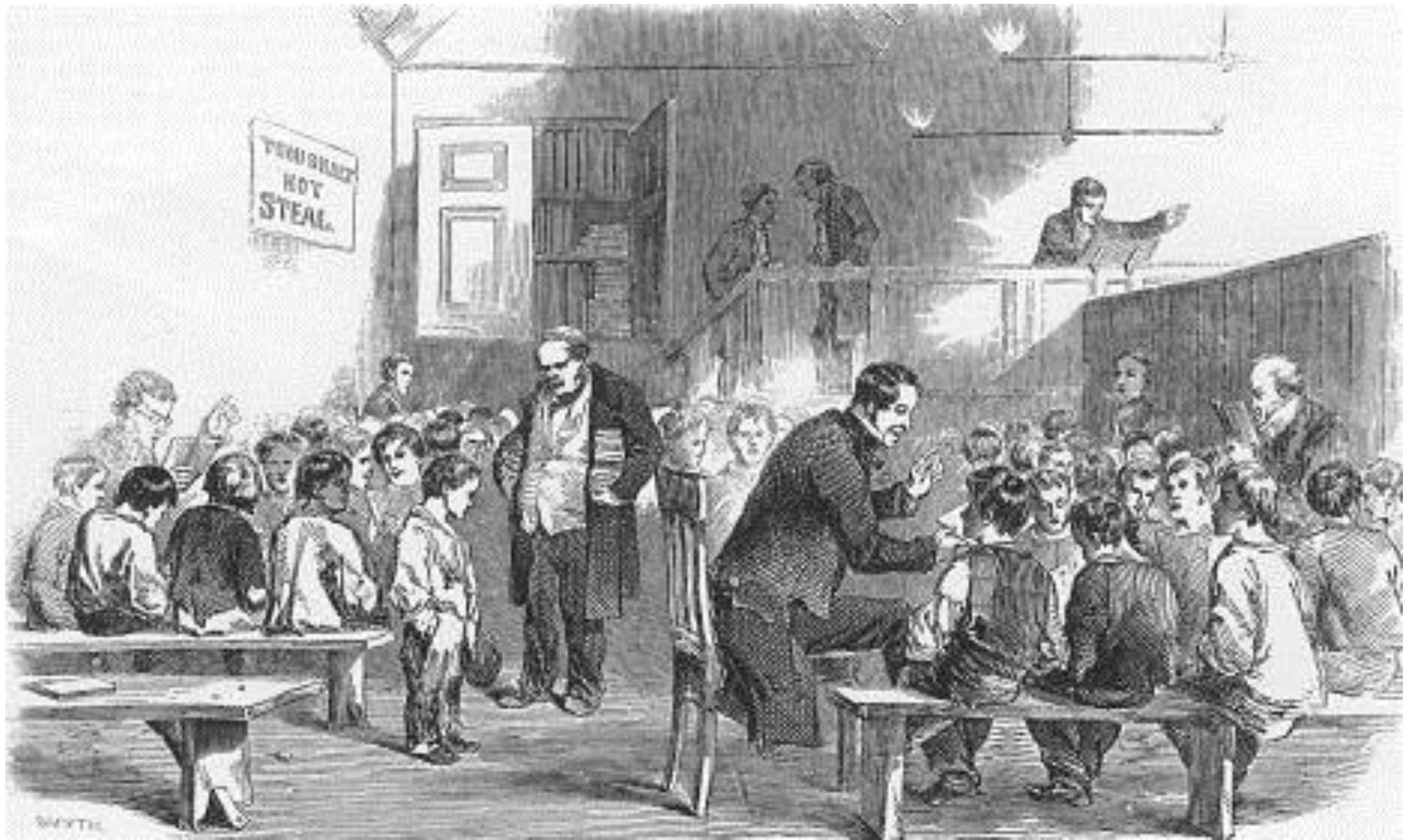
NEW ENGLAND FACTORY LIFE—"BELL-TIME."—DRAWN BY WINSLOW HOMER.—[SEE PAGE 471.]



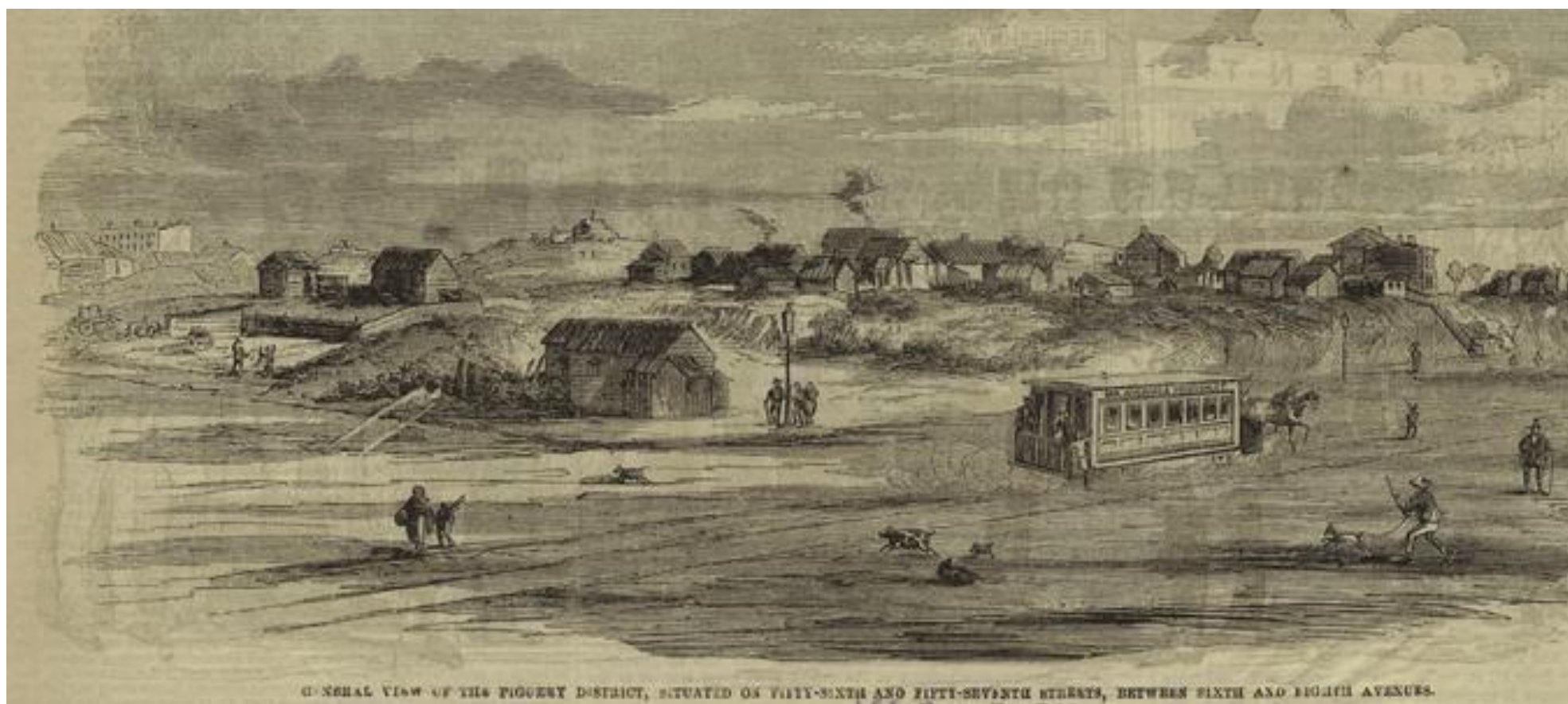
“First Catholic Church in Lowell (St. Patrick’s),” 1831, from *Irish Catholic Genesis of Lowell*



“A Clerkenwell Interior,” England, 1854, from *London Shadows*



“Lambeth Ragged School, 1846,” a school for poor children in England, from workhouses.org.uk



“General View of the Piggery District,” the Irish neighborhood in New York City, c. 1840s, from Ephemeral New York