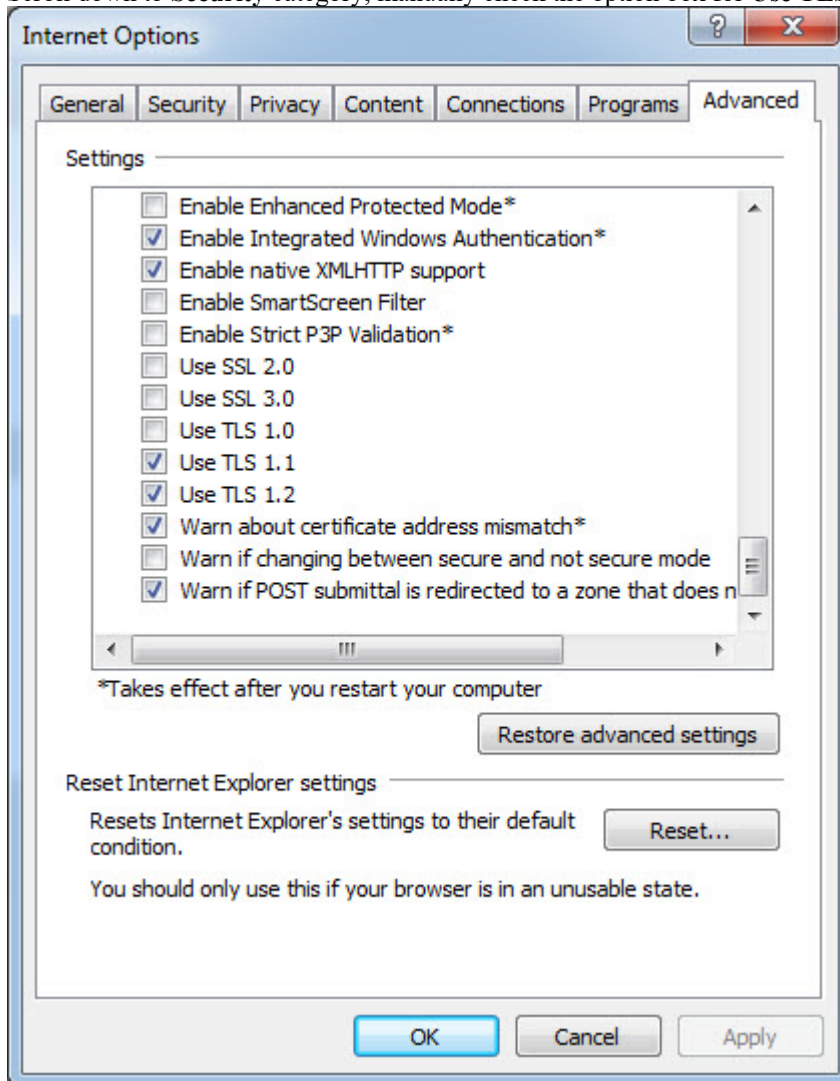


To enable TLS 1.2 protocol on web browsers (Microsoft IE, Google Chrome, Mozilla Firefox, Opera, Apple Safari)

Microsoft Internet Explorer

1. Open **Internet Explorer**
2. From the menu bar, click **Tools > Internet Options > Advanced** tab
3. Scroll down to **Security** category, manually check the option box for **Use TLS 1.2**

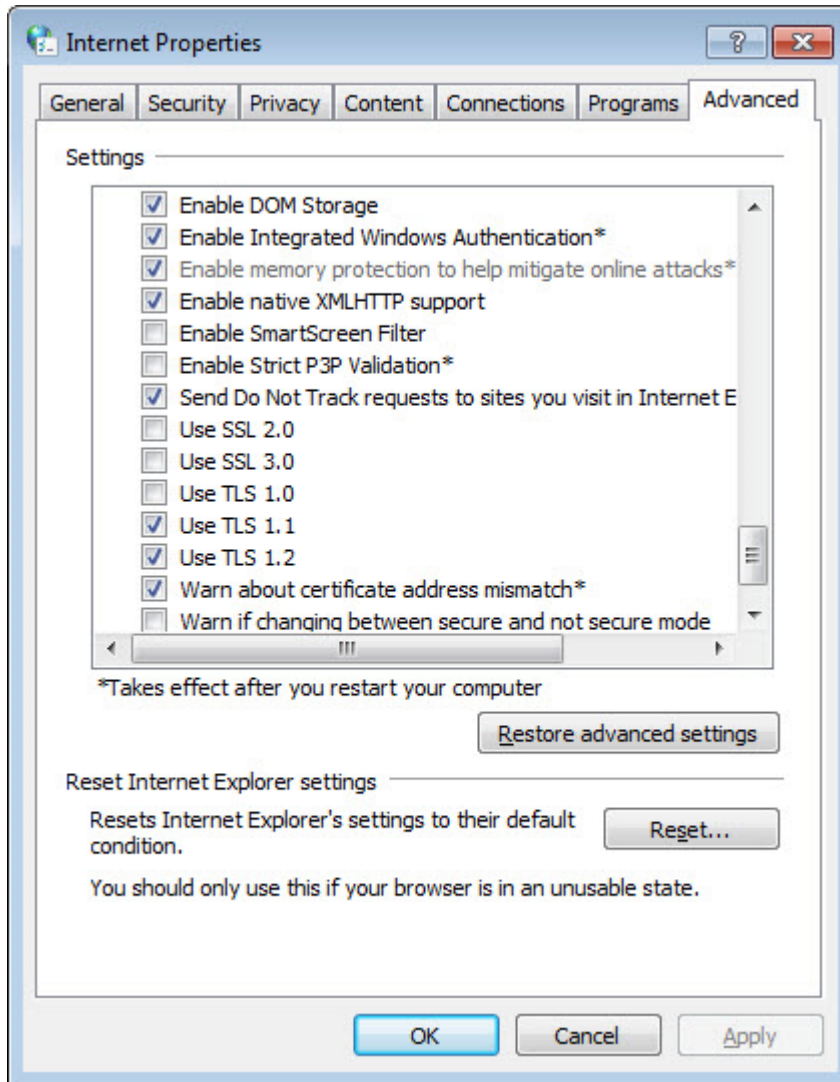


4. Click **OK**
5. Close your browser and restart Internet Explorer

Google Chrome

1. Open **Google Chrome**

2. Click **Alt F** and select **Settings**
3. Scroll down and select **Show advanced settings...**
4. Scroll down to the **Network** section and click on **Change proxy settings...**
5. Select the **Advanced** tab
6. Scroll down to **Security** category, manually check the option box for **Use TLS 1.2**

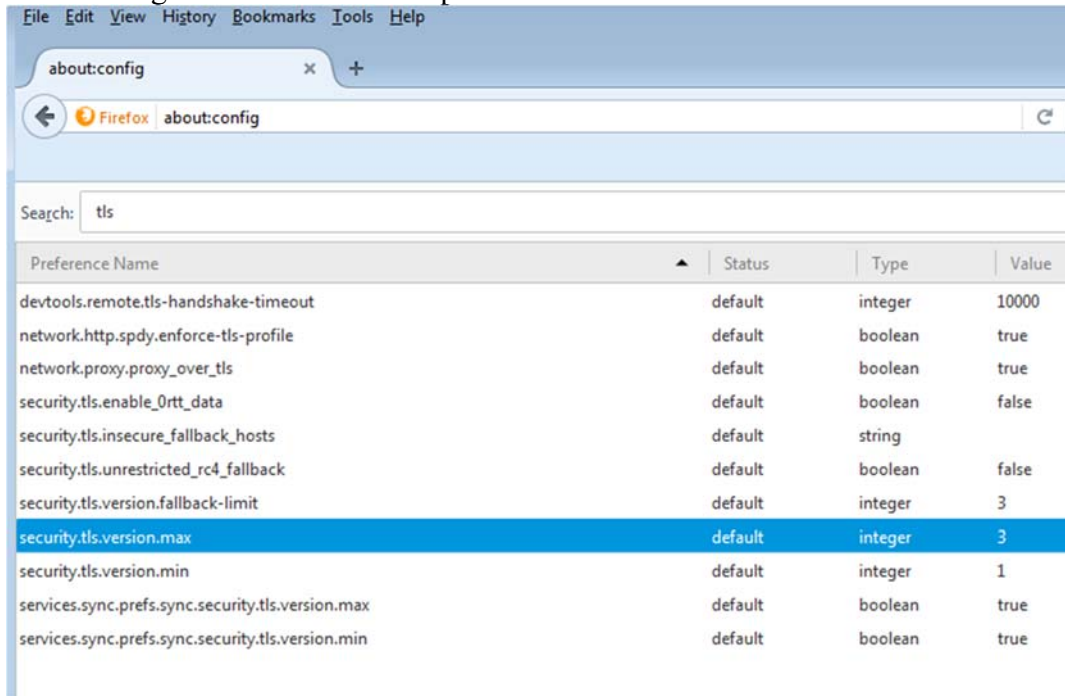


7. Click **OK**
8. Close your browser and restart Google Chrome

Mozilla Firefox

1. Open **Firefox**
2. In the address bar, type **about:config** and press Enter

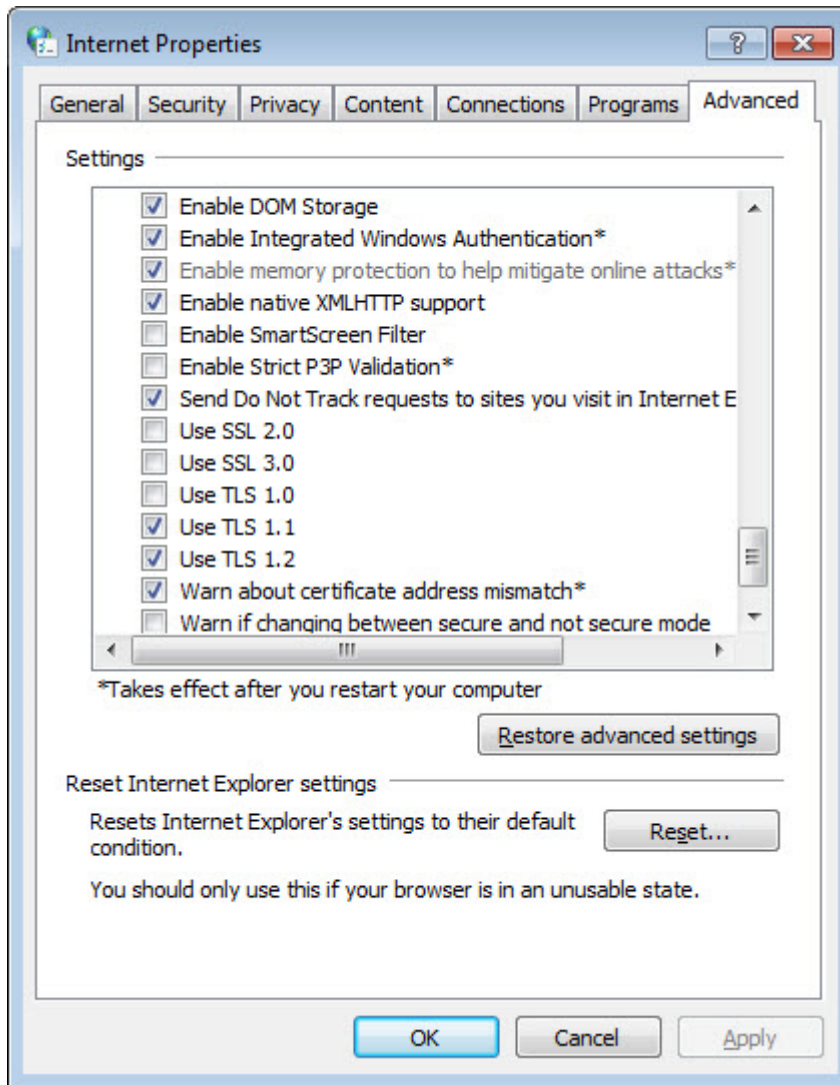
3. In the **Search** field, enter **tls**. Find and double-click the entry for **security.tls.version.max**
4. Set the integer value to **3** to force protocol of TLS 1.2



5. Click **OK**
6. Close your browser and restart Mozilla Firefox

Opera

1. Open **Opera**
2. Click **Ctrl** plus **F12**
3. Scroll down to the **Network** section and click on **Change proxy settings...**
4. Select the **Advanced** tab
5. Scroll down to **Security** category, manually check the option box for **Use TLS 1.2**



6. Click **OK**
7. Close your browser and restart Opera

Apple Safari

There are no options for enabling SSL protocols. If you are using Safari version 7 or greater, TLS 1.2 is automatically enabled

Other

If you are using a web browser other than those listed, consult the 'Help' for your web browser to enable TLS 1.2.