

## Using the Pulse for Linux Client

PulseSecure, our VPN vendor, has certified this client to run with the following versions of Linux but it may work with others. Information Technology will support installations running on these versions.

- Ubuntu 14.04, 15.04 and 16.04
- CentOS 6, 7
- RHEL 7
- Fedora

A command line version and a gui version of the linux client is available, both get installed when the linux package is installed.

### **Installation directions:**

1. Open a web browser and navigate to <https://www.uml.edu/vpn>
2. If using Ubuntu Linux:
  - a. Download the '.deb' file.
  - b. Download the 'vpnCA.cer' file.
  - c. Append the full contents of the vpnCA.cer file to /etc/ssl/certs/ca-certificates.crt and save the file.
  - d. Install the .deb package with: **sudo dpkg -i filename.deb**
  - e. You can remove the .deb file once the package installs.
3. If using Centos/Fedora/RHEL Linux:
  - a. Download the '.rpm' file.
  - b. Download the 'vpnCA.cer' file.
  - c. Append the full contents of the vpnCA.cer file to /etc/pki/tls/certs/ca-bundle.crt and save the file.
  - d. Install the .rpm package with: **sudo rpm -ivh filename.rpm**
  - e. You can remove the .rpm file once the package installs.
4. Run this command to ensure your computer is configured with the proper packages to support the GUI version. This will determine what is needed for packages and will install them on your system.

**`/usr/local/pulse/PulseClient.sh install_dependency_packages`**

### Connecting to the VPN using the command line:

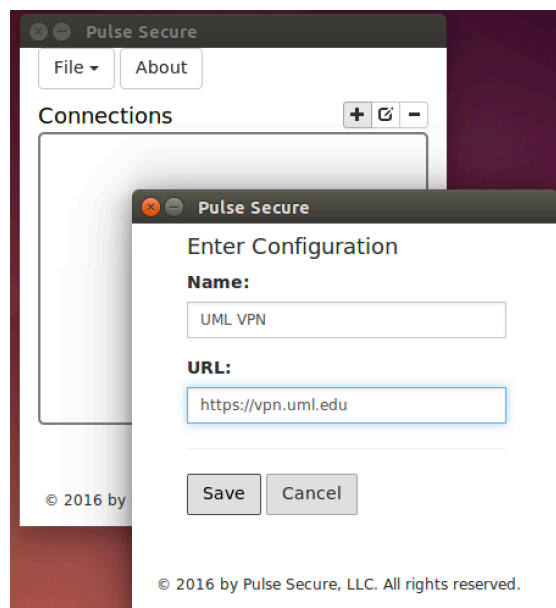
1. Use this command to start the VPN connection. You will be prompted for your password:  

```
/usr/local/pulse/PulseClient.sh -h vpn.uml.edu -u UML-email-address \ -U https://vpn.uml.edu -r Default_Users
```
2. Once connected, the pulse program will continue to run, and keep you connected, until you terminate the PulseClient.sh program, by using ctrl-c to stop it. You can open up other terminal sessions, but closing the one PulseClient.sh is running in will terminate your VPN connection.
3. To determine your connection status, from another terminal prompt enter the command: **/usr/local/pulse/PulseClient.sh -S**
4. To terminate the VPN connection, either use ctrl-c to stop the running pulse program in the terminal window you launched it from, or run this command from another terminal session: **/usr/local/pulse/PulseClient.sh -K**

### Connecting to the VPN using GUI application:

1. The installation process should have included a Pulse Secure icon on your system. If it is not available, you can launch the gui with these commands:  

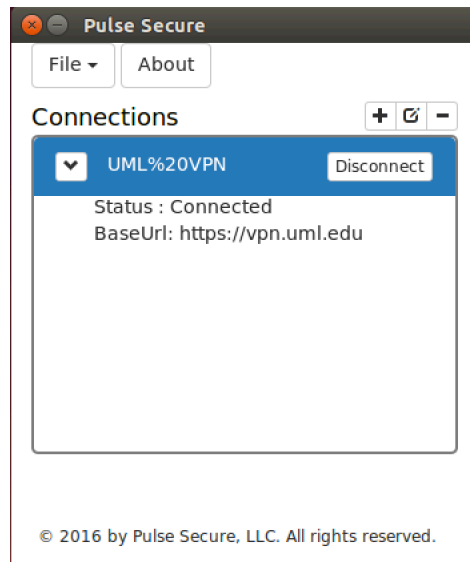
```
export LD_LIBRARY_PATH=$LD_LIBRARY_PATH:/usr/local/pulse:/usr/local/pulse/pulseUi
```
2. Once the program launches, click the + sign next to 'Connections'. In the window that appears, enter 'UML VPN' into the Name: field and <https://vpn.uml.edu> into the URL field and click Save.



3. To connect to the VPN, click the 'Connect' button next to the entry created. In the window that appears, type in your UMass Lowell email address and password then click 'Sign In'.
4. Once connected, clicking the down arrow next to the vpn entry will display your

connection status.

5. To disconnect from the VPN, click the 'Disconnect' button next to the VPN label in the application.



Should you experience problems, please contact the IT Service Desk at 978 934 4357

**Ken Kleiner   Information Technology   January 31, 2017**