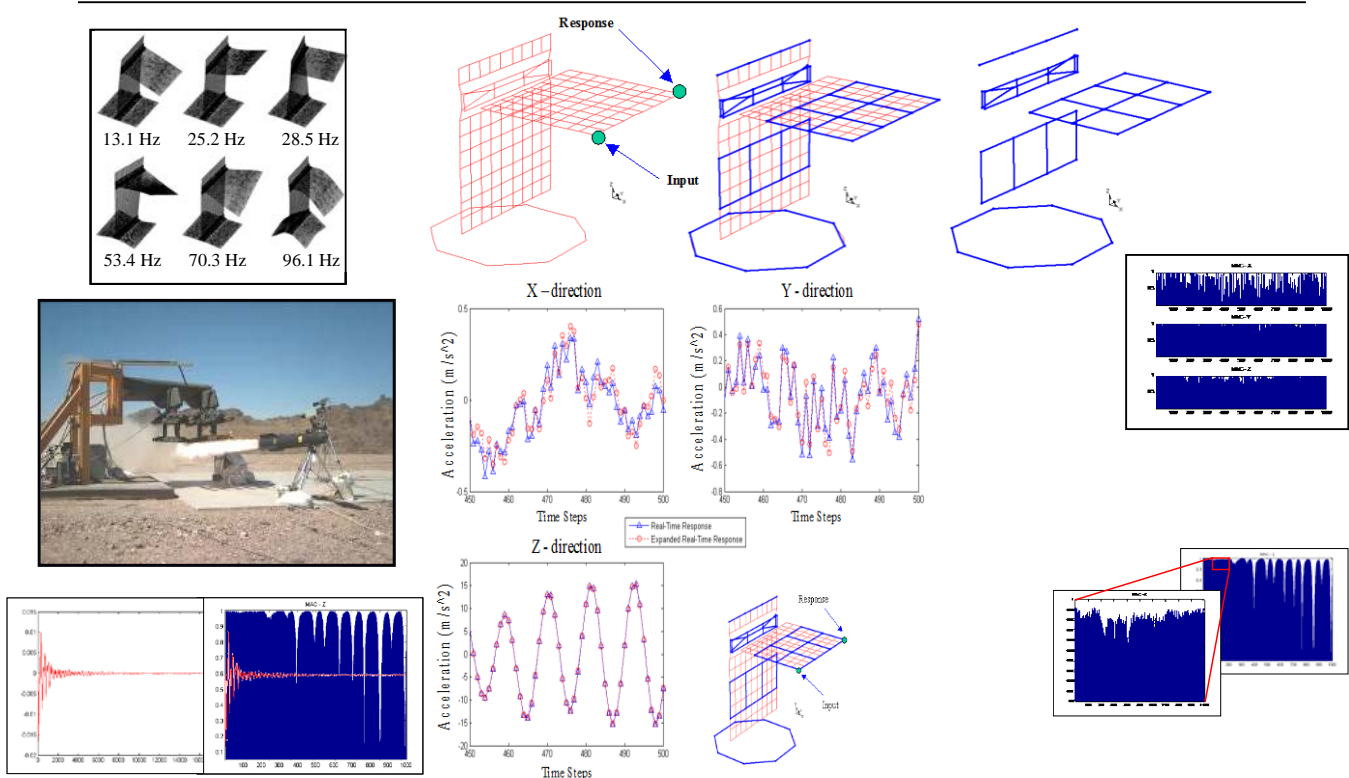


## Expansion of Real Time Transient Response



Real time operating data is normally collected at limited sets of data points when measuring transient events. Lack of sufficient data points creates ambiguity in the visual response. A new expansion process is used to augment the minimal set of data points to a much larger set for improved visualization. The process has been shown to be very robust and provides tremendous insight into the actual system response especially during transient events.