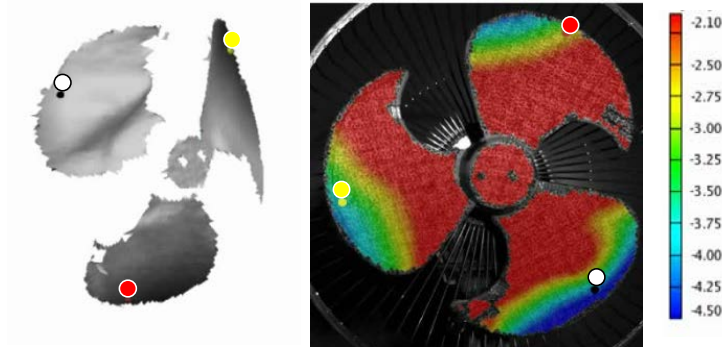
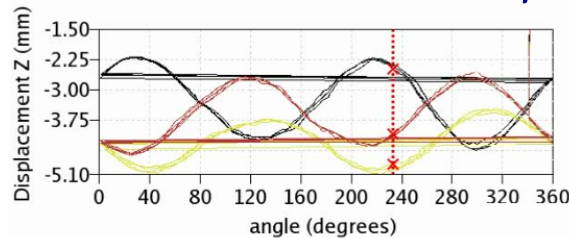


## Digital Image Correlation on Rotating Components

### *Out of plane vibration of rotating blades captured by DIC experiments*



### *Displacement Z tracked near the tip of each blade for 3 cycles*



Digital image correlation has been mainly used for static applications. In the current research, DIC is used to identify structural dynamic characteristics on rotating components. This work aims to address items such as turbine blades, windmill blades, helicopter rotors, and other similar equipment where it is very difficult to obtain measurements with traditional techniques.