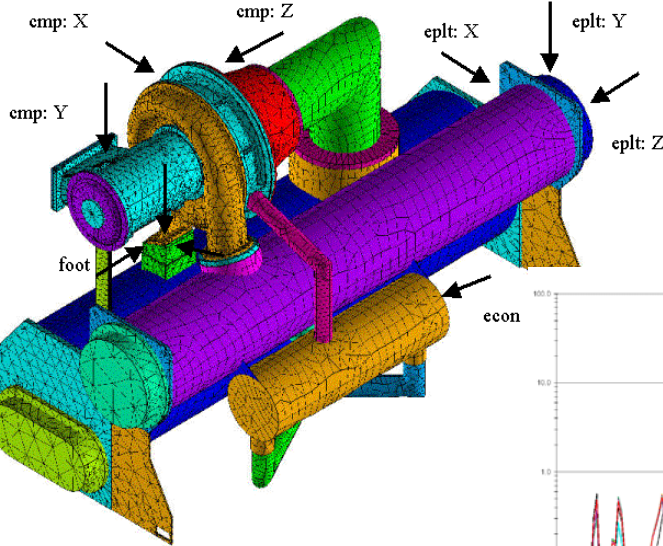




Optimal Reference Selection for Modal Testing

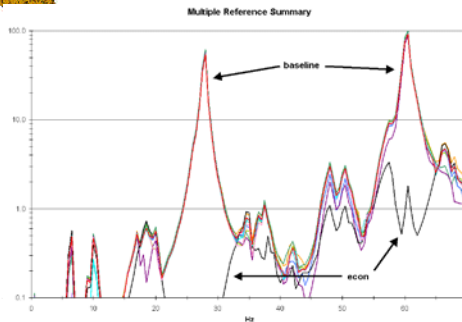
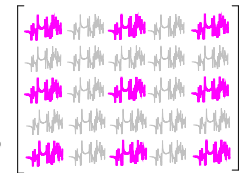
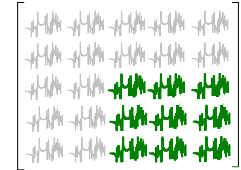
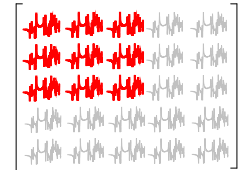


1



$$[H] = [U][S][V]^H$$

Multiple references evaluated



Chiller

Three selected for critical test for correlation with FEM

Identification of appropriate references for high fidelity modal tests can be improved using the Test reference Identification Procedure. Performing an SVD on a small set of measurements helps to identify number of references and optimal locations.