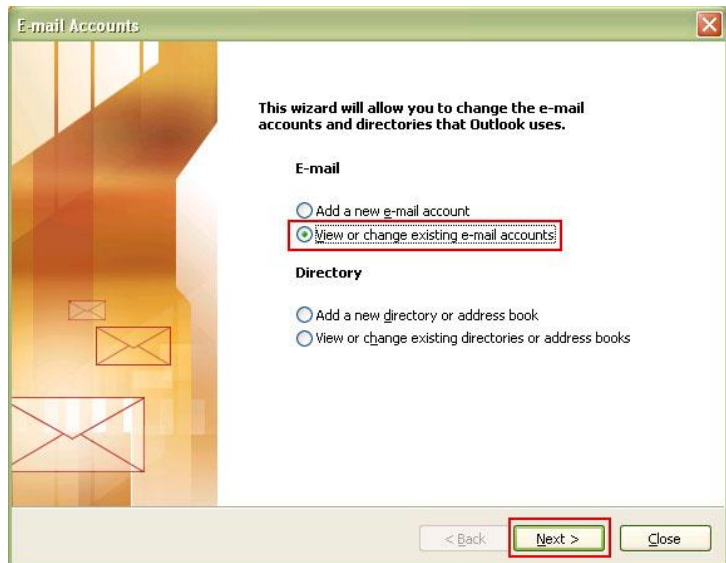


# Outlook 2003 Secure Connection

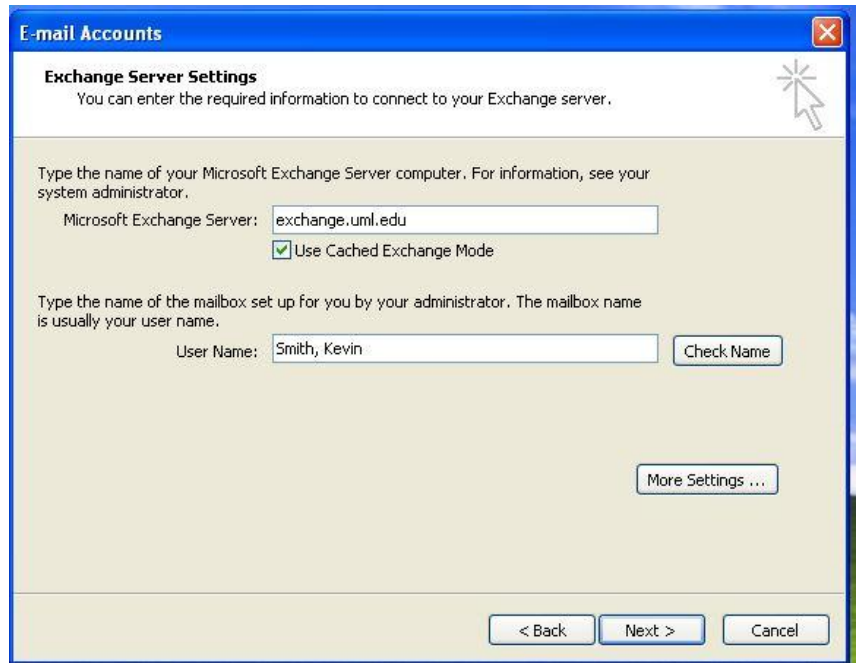
To connect properly to the Exchange 2010 e-mail server, Outlook 2003 clients must be configured for a secure connection to the Exchange server.

## To enable a secure connection:

1. Open Outlook
2. On the menu, go to **Tools > E-mail Accounts**
3. Select **View or change existing e-mail accounts**
4. Click **Next**
5. On the E-mail Accounts screen, click **Change...**



6. On the Exchange Server Settings screen, click **More Settings...**



7. Click on the **Security** tab and check **Encrypt data between Microsoft Office Outlook and Microsoft Exchange Server**



8. Click **OK**

9. Close the E-mail Accounts window

If you have questions, please contact the Help Desk or 978-934-4357 (ext. 4357/HELP on campus) or helpdesk@uml.edu.