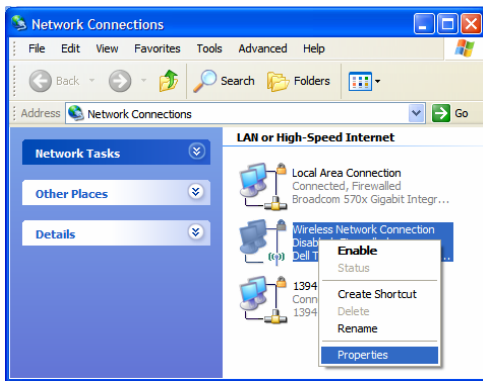


Welcome to the UMass Lowell wireless network. There are a number of “hotspots” on campus that provide wireless network access to our network and the Internet. The instructions below will help you setup and log into the network using a PC or laptop. The University supports various wireless devices, including the Windows XP wireless utility, Apple’s Airport Extreme and Dell handhelds. While most network devices do work on the network, some may require other settings than those described below. Please call the Help Desk if you need assistance.

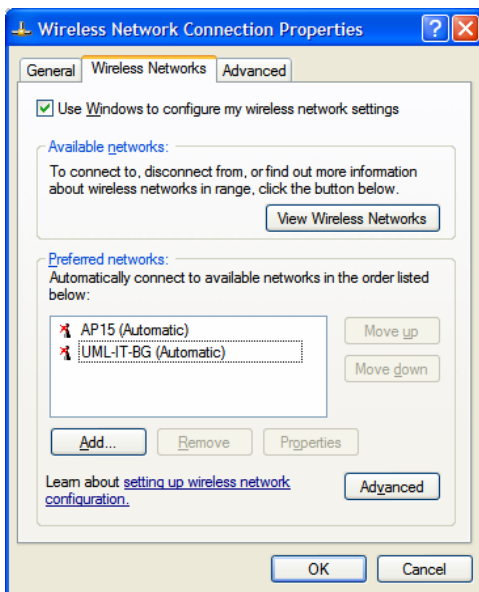
Setting Up Your Laptop

Use the following instructions to set up your laptop to access UML’s wireless network.

1. Click **Start > Control Panel > Network Connections**.
2. Right-click on the **Wireless Network Connection** and select **Properties**.



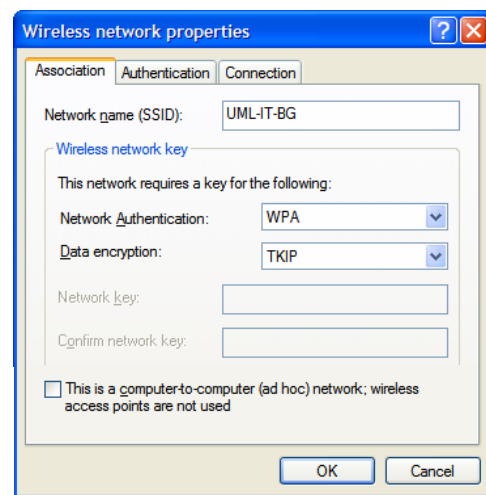
3. Click the **Wireless Networks** tab and click the Use Windows to configure my wireless network settings option if it is not already checked.



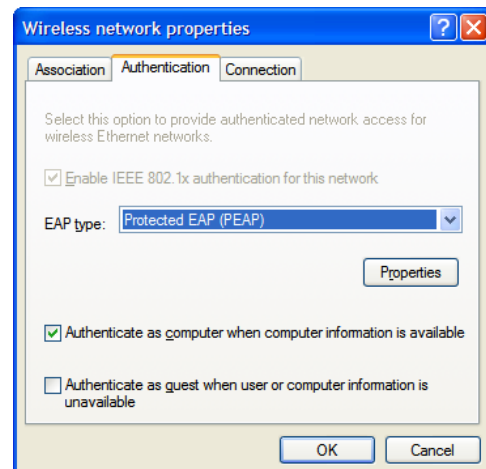
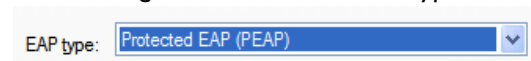
4. Click the **Add...** button.

5. In this window, students should make the following selections:

Network name (SSID): **UML-IT-A** or **UML-IT-BG**
 Network Authentication: **WPA**
 Data encryption: **TKIP**



6. Click on the **Authentication** tab and click the Enable IEEE 802.1x authentication for this network option if it is not already checked. Make the following selection next the EAP type:

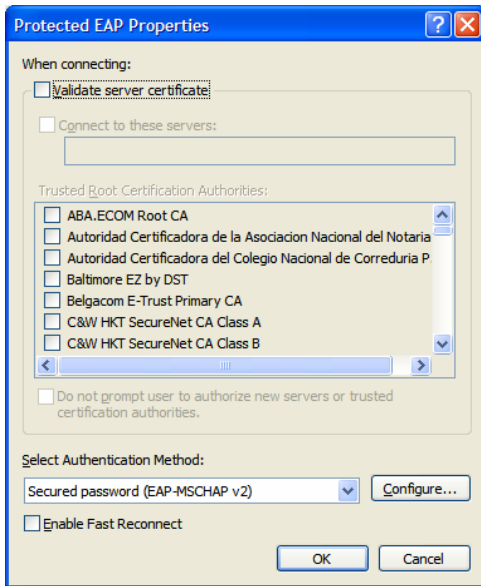


- Click the **Properties** button.
- Uncheck the Validate server certificate checkbox and select Secured password (EAP-MSCHAP v2) from the drop-down box:

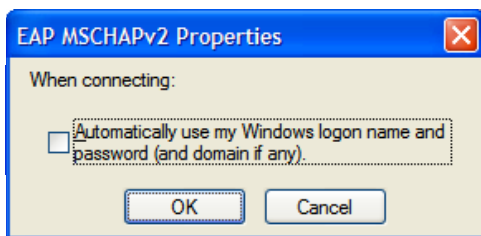
Validate server certificate

Secured password (EAP-MSCHAP v2) ▼

so the window appears like this:



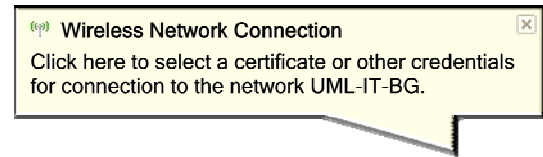
- Click the **Configure...** button and uncheck **Automatically use my Windows logon name and password (and domain if any)** this option.



- Click **OK** four times to close each of the open windows.

Accessing the UML Wireless Network

- You will see a bubble at the bottom right of your screen. Click on the bubble then...



...enter your username and password and click **OK**.

Username: **(your UML email address)**
 Password: **(your UML email password)**



NOTE: The password will appear as •••••• as you type. Leave the Logon domain blank.

Congratulations! You are now connected to the UML network.