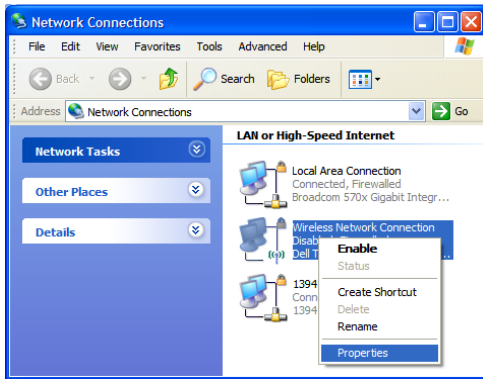


Welcome to the UMass Lowell wireless network. There are a number of "hotspots" on campus that provide wireless network access to our network and the Internet. The instructions below will help you set up and log into the network using a PC or laptop. Please call the Help Desk at ext 4357 if you need additional assistance.

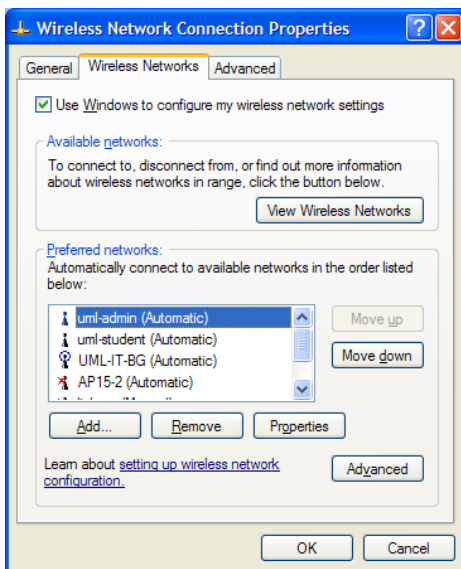
Setting Up Your [device]

Use the following instructions to set up your laptop to access UML's wireless network.

1. Click **Start > Control Panel > Network Connections**.
2. Screen shots like the one below are about 2.5" across. Make sure they are proportional. Menu items should be bolded.



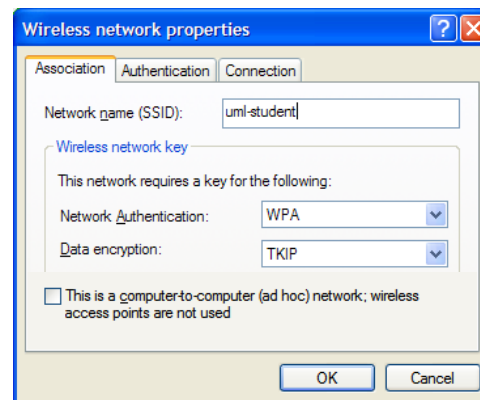
3. Click the **Wireless Networks** tab (the name of the tab is in bold) and click the Use Windows to configure my wireless network settings option if it is not already checked.



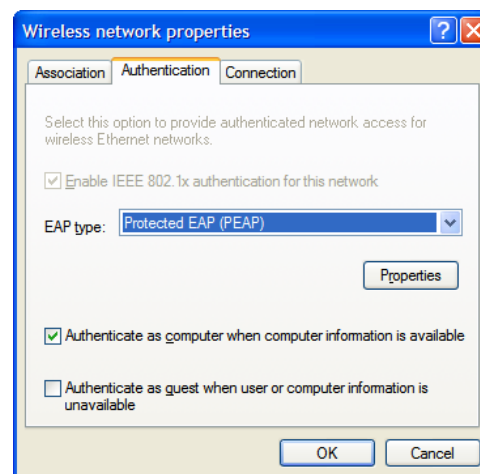
4. Click the **Add...** button (buttons are bold).

5. In this window, students should make the following selections:

(Note that the field names are not bold but the data entered is)
 Network name (SSID): **uml-admin** or **uml-student**
 Network Authentication: **WPA**
 Data encryption: **TKIP**




6. Click on the **Authentication** tab and click the Enable IEEE 802.1x authentication for this network option if it is not already checked. Make the following selection next the EAP type:



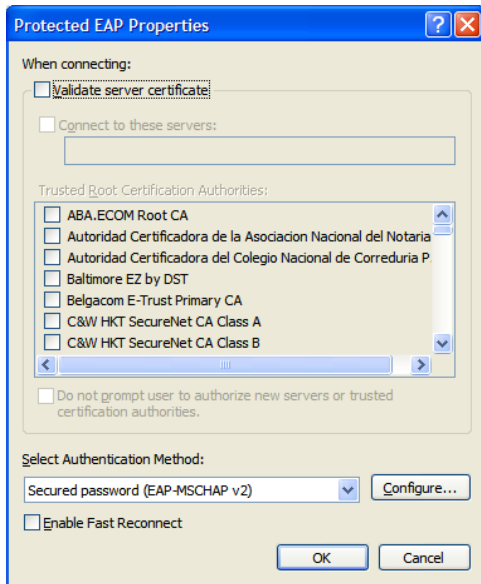
7. Click the **Properties** button.

8. Uncheck the Validate server certificate checkbox and select Secured password (EAP-MSCHAP v2) from the drop-down box:

Validate server certificate

Secured password (EAP-MSCHAP v2) 

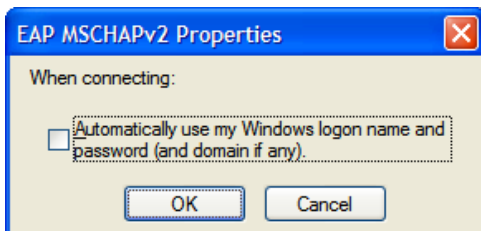
so the window appears like this:



9. Click the **Configure...** button and uncheck

Automatically use my Windows logon name and password (and domain if any).

this option.



10. Click **OK** four times to close each of the open windows.

Accessing the UML Wireless Network

11. You will see a bubble at the bottom right of your screen. Click on the bubble then...



...enter your username and password and click **OK**.

Username: (your UML email address)
 Password: (your UML email password)
 * **Note:** for your username, do not put the @uml.edu or @student.uml.edu



NOTE: The password will appear as •••••• as you type. Leave the Logon domain blank.

Congratulations! You are now connected to the UML network.