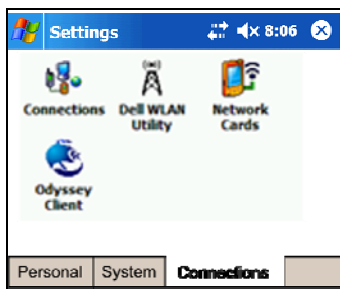


Welcome to the UMass Lowell wireless network. There are a number of “hotspots” on campus that provide wireless network access to our network and the Internet. The instructions below will help you setup and log into the network using a PC or laptop. The University supports various wireless devices, including the Windows XP wireless utility, Apple’s Airport Extreme and Dell handhelds. While most network devices do work on the network, some may require other settings than those described below. Please call the Help Desk if you need assistance.

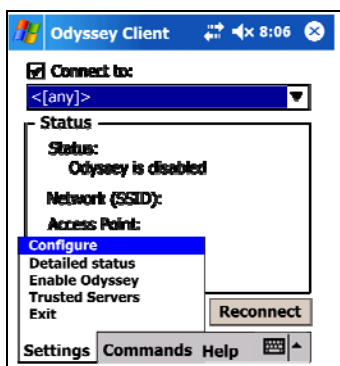
Before getting started, turn on your Dell Axim and press the ‘enable wireless’ button.



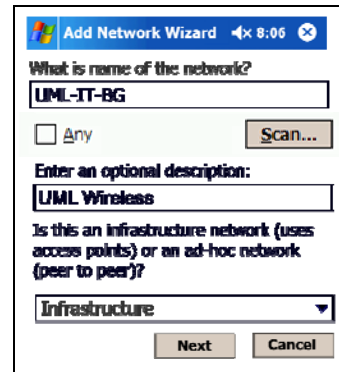
1. Click **Start > Settings**.
2. Click the **Connections** tab at the bottom.



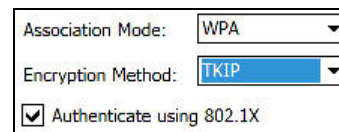
3. Click **Odyssey Client**.
4. Click **Settings > Configure**.



5. Click **Add...**
6. On this page, enter the name of the network and optional description as shown (**UML-IT-BG** or **UML-IT-A**). Select Infrastructure from the drop-down.



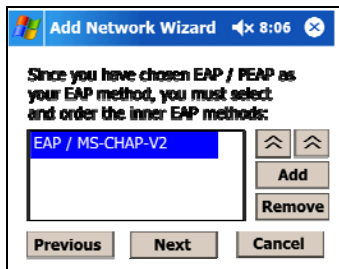
7. Click **Next**.
8. On this page, make the following selections:



9. Click **Next**.
10. Click **Add...** and select **EAP-PEAP**.
11. Click **Next**.
12. Enter any name here.



13. Click **Next**.
14. **EAP/MS-CHAP-V2** will appear here. If it is not here, click the **Add** button and select it.



15. Click **Next**.

16. On this page, enter your username and password. Your username is your UML email address and your password is your UML email password.



Congratulations! You are now connected to the UML network.