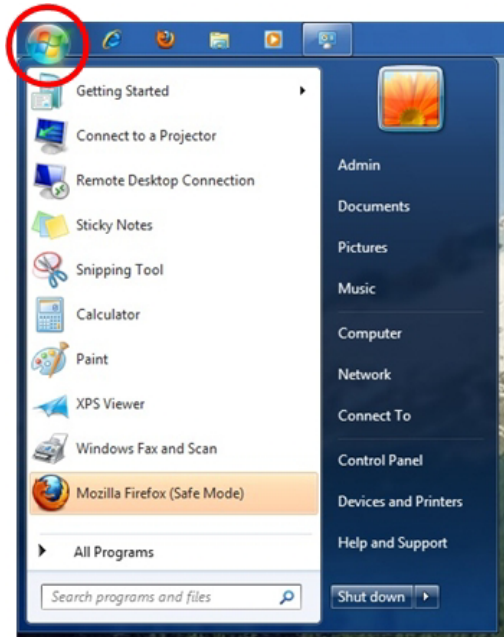


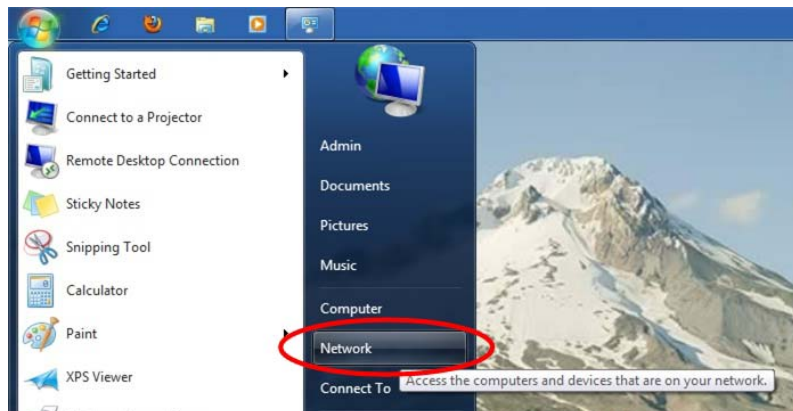
Wireless at UML: Getting Connected (PEAP for Windows 7)

(In this page we provide instructions on how to connect to "uml-admin" and "uml-student" manually.)

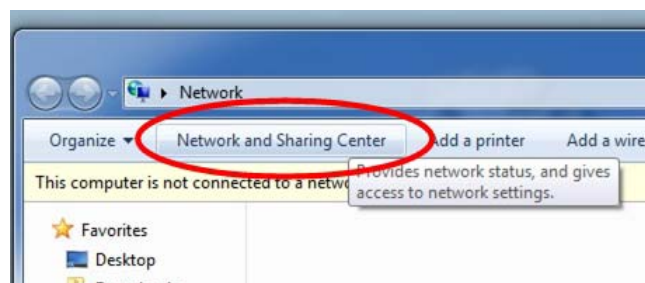
1. From your Desktop, left click on the **Start** button



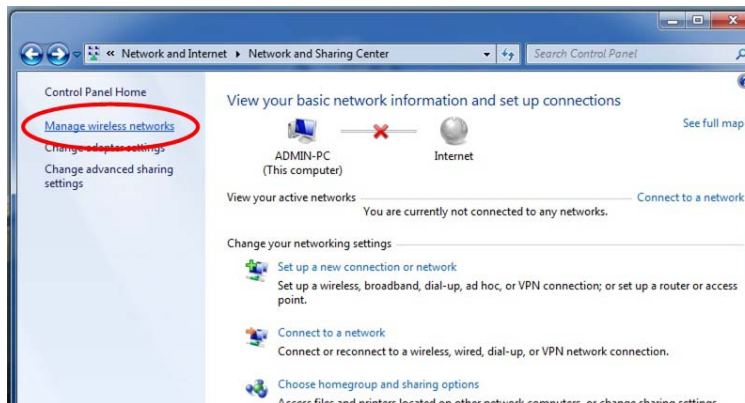
2. Then left click on **Network**. This will then open the Network window.



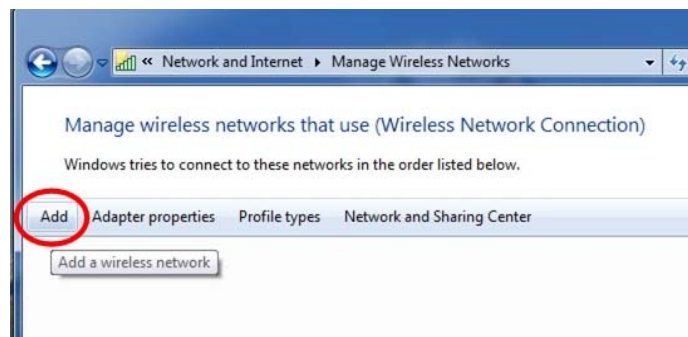
3. Left click on **Network and Sharing Center**. This will open the "View your basic network information and set up connections" window.



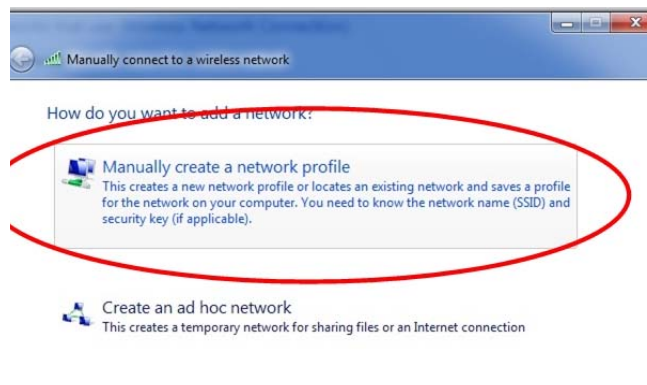
4. Left click the **Manage wireless networks** hyperlink on the left-hand column.



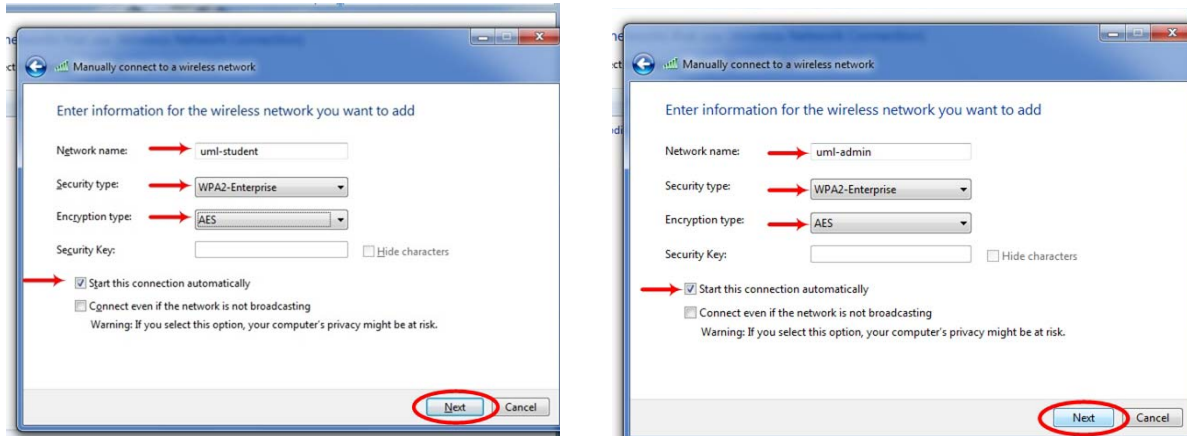
5. Left click on the **Add** button



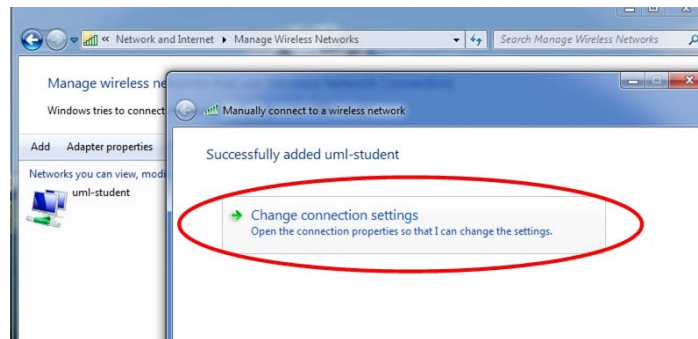
6. Left click on the large button, labeled “**Manually create a network profile**”



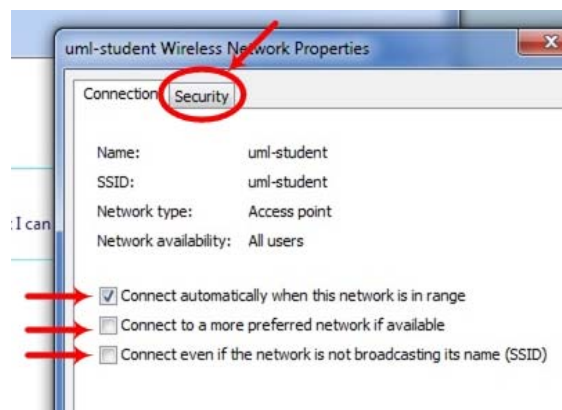
7. Manually input the following information, making sure to use uml-admin for faculty/staff users, and uml-student for students. When done, click **Next**



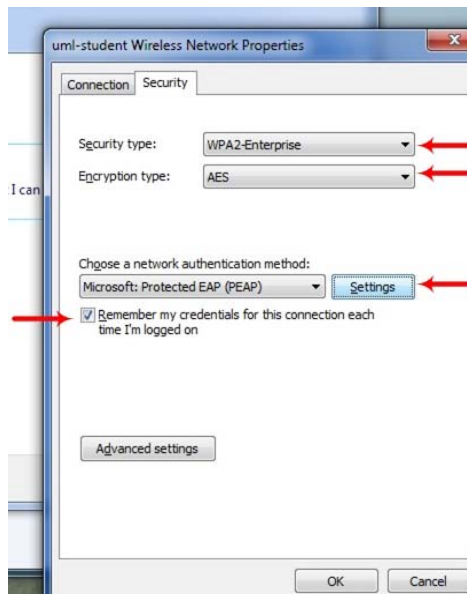
8. Left click the large button, labeled “**Change connection settings**”



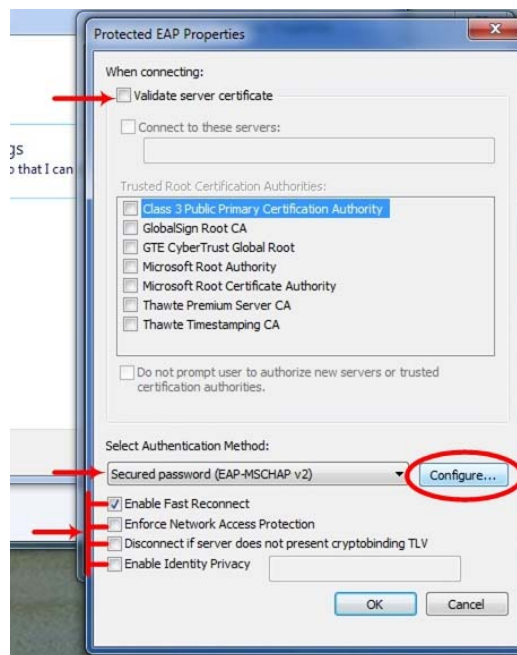
9. Make sure the three check boxes appear as below, then left click on the tab labeled “**Security**”



10. Make sure the two drop down menus, labeled **Security** and **Encryption Type** appear as in the figure below. If you would like your password to be remembered, so that you will not have to manually type it upon subsequent connections, check the box labeled “**Remember my credentials for this connection each time I’m logged on.**” Once finished, left click the button labeled “**Settings.**”



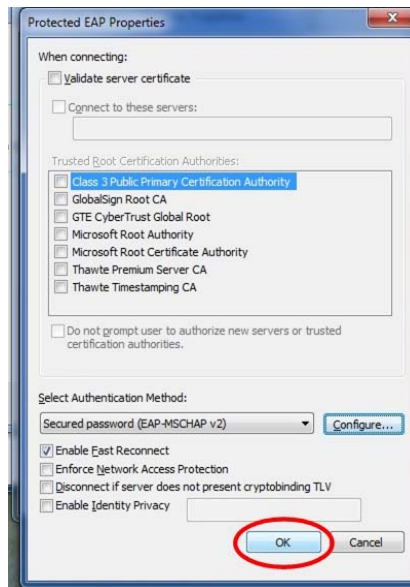
11. Make sure to uncheck “**Validate server certificate**”. Verify that the other four check boxes are configured as those in the picture below, and that the pull-down menu has “**Secured password (EAP-MSCHAP v2)**” selected. After double-checking to make sure all information is correct, left click on the “**Settings**” button.



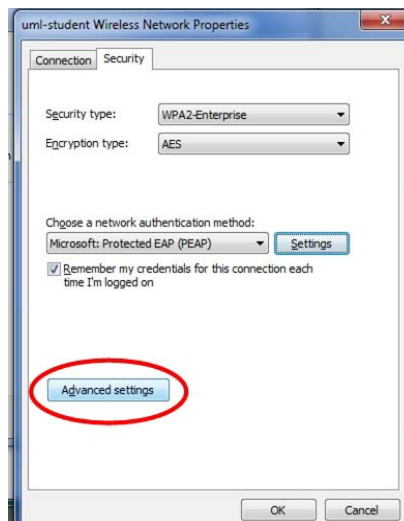
12. Uncheck the box labeled “**Automatically use my Windows logon name and password (and domain if any)**”, and then left click the “**OK**” button.



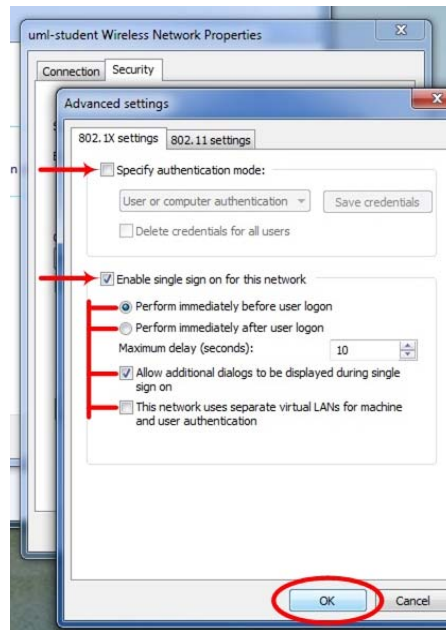
13. Left click the "OK" button



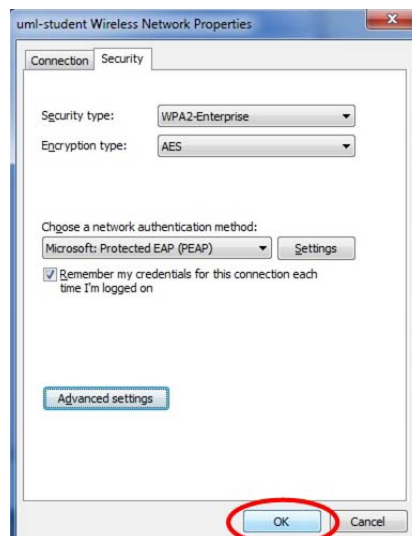
14. Left click the "Advanced settings" button



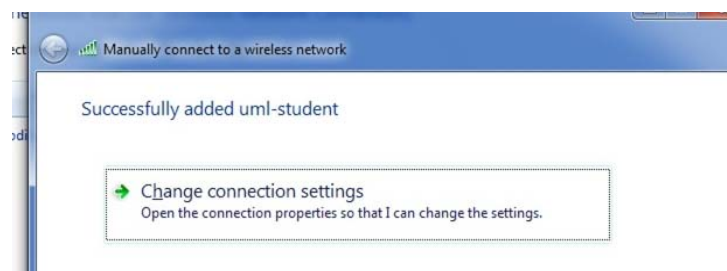
15. Make sure to check the **“Enable single sign on for this network.”** Verify all other settings match those below, then left click the **“OK”** button.



16. Left click the **“OK”** button.



17. Left click anywhere on the balloon **“Additional information is needed to connect uml-student”**, which pops up from your taskbar.

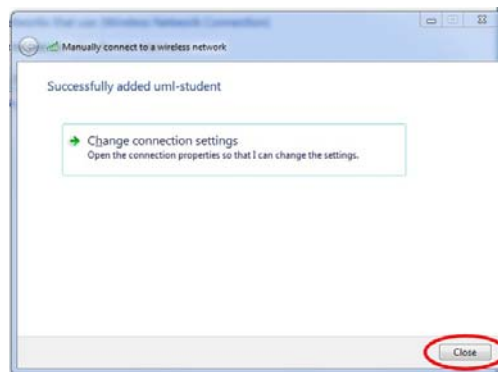


18. Type your first name, followed by an underscore, followed by your last name, in the topmost box. In the lower box, you're your UML email password. Once finished, left click the "OK" button.

Note: If any problems occur, verify you're your password has not been changed or expired by logging into your UML email account.



19. Left click the "Close" button, if you have not done so already.



20. To check if you are connected, left click the wireless bars symbol, circled in red, below, and verify that it says "Connected" next to uml-student/admin and that it shows uml.edu and Internet access near the top of the box.



21. Close all other windows by left clicking on the rectangular red "X" in the top right-hand corner of the window.

✚ Check to make sure that connectivity has been achieved by opening a web page in your internet browser, try to open something that has not been opened recently to prevent the website from being loaded from your cache instead of actually going out to the internet. If the website loads then you have followed the steps correctly and should have full use of the UMass Lowell Wireless network!

- ✚ Note: If a window opens, asking you to choose the location of the network, with the options of “Home”, “Private”, and “Public”, our recommendations are that you choose “Public”, as the other options will leave your computer at a relatively increased risk of attack.