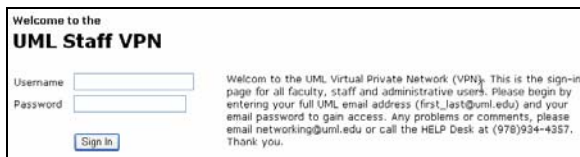


The idea of the **virtual private network (VPN)** is to make your home computer appear to be on the UML Network to allow you access to secure sites and/or systems that have access restricted to computers outside our network. A **virtual private network (VPN)** is a private data network that makes use of the public telecommunication infrastructure, maintaining privacy through the use of a tunneling protocol and security procedures. A VPN account does not replace your existing Internet access (i.e. you still need to keep your Comcast, Verizon, AOL, PPP account, ISP account or other account used to access the Internet).

1. Open your web browser (IE, Netscape, Firefox).
2. Go to <https://vpn.uml.edu/staff>. If you get a "security alert", click **Yes** to accept the security certificate. You will see a welcome screen as shown below.

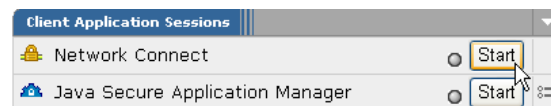


3. Enter your complete UML email address in the Username field.
4. Enter your email password in the Password field.
5. Click **Sign In**.

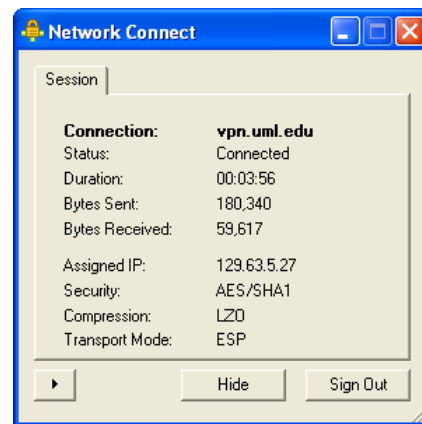
Using Network Connect

In order to use this feature, you must have Administrator privileges on the computer you are using. Network Connect allows you to use programs on your computer (e.g. Microsoft Outlook).

6. Click on the **Start** button on the Network Connect row.



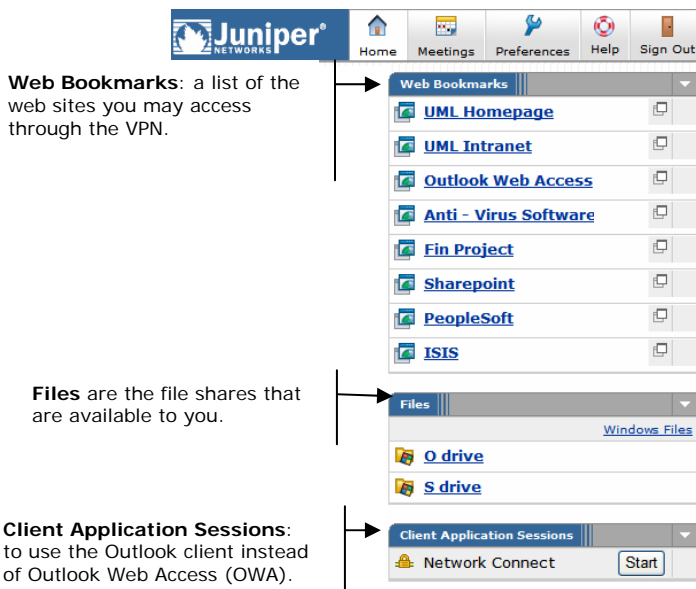
7. The VPN will attempt to install the software on your computer. If a security alert appears, click **OK** to allow the installation. When the installation is complete and you are connected, a window similar to the one below will appear.



And, an icon will appear in your system tray indicating that you are connected.



Congratulations! You are now connected to the UML network via VPN.



Web Bookmarks: a list of the web sites you may access through the VPN.

Files are the file shares that are available to you.

Client Application Sessions: to use the Outlook client instead of Outlook Web Access (OWA).

If you are using a computer running Windows XP and are having problems using Network Connect, you may have to download and install a patch from the following address:

<http://support.microsoft.com/default.aspx?scid=kb;en-us;884020>

Help Desk