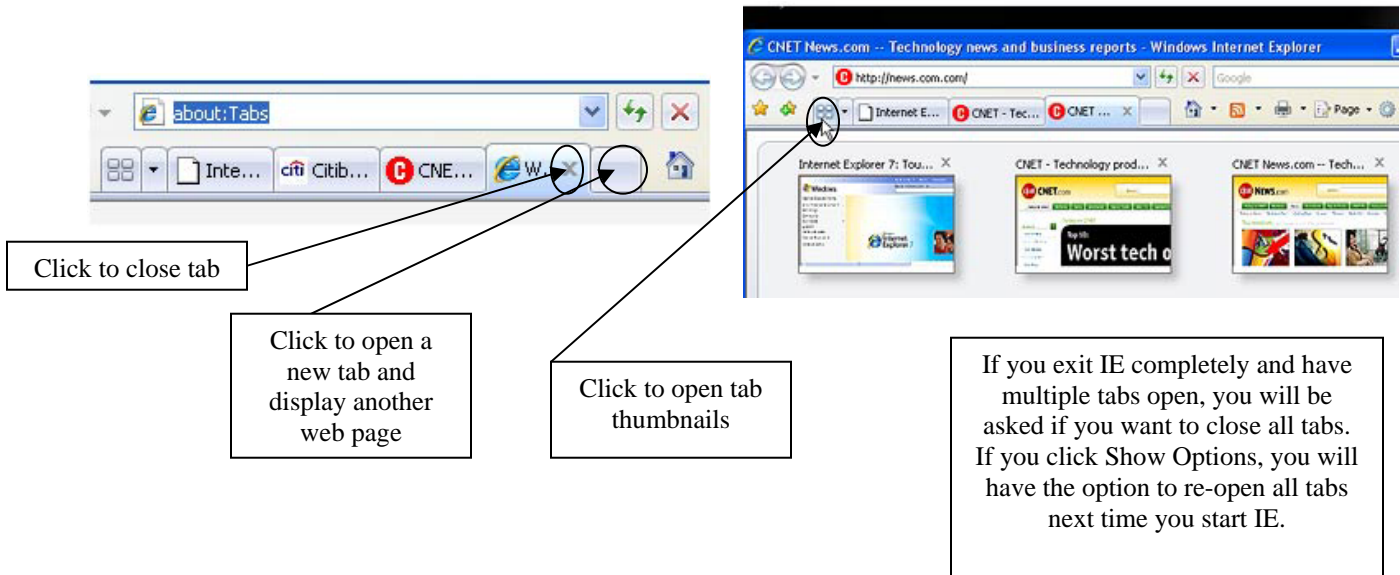
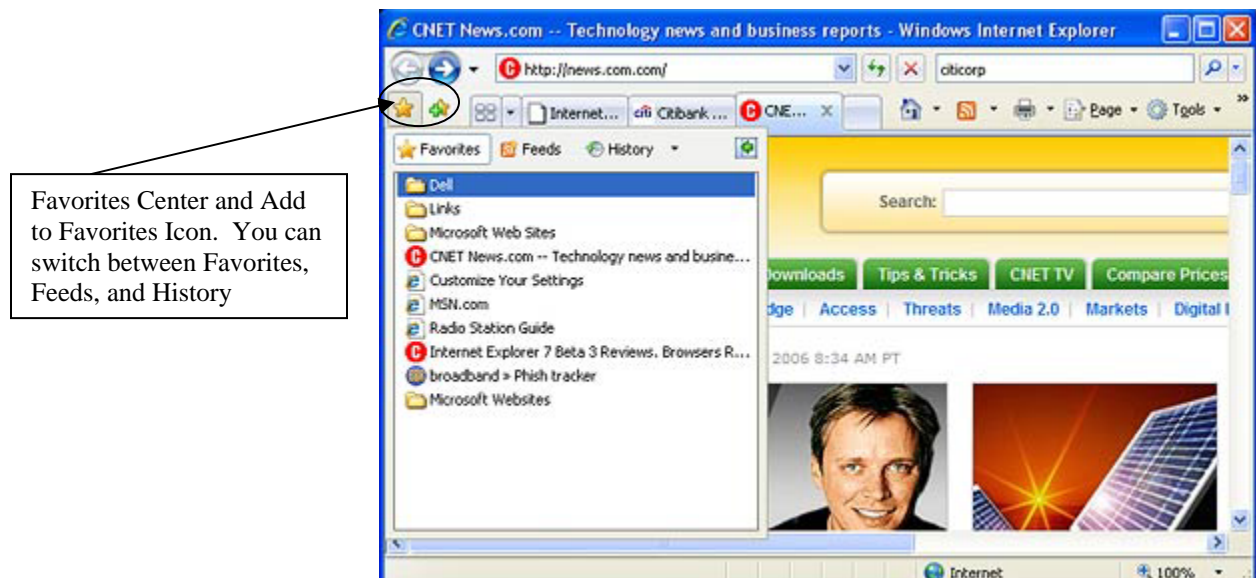




**Tabbed Browsing** - Tabbed browsing allows you to open, view, and close multiple web pages within one IE 7 session. The tabs, which can be reordered by dragging the tabs, can also be previewed on a page (called QuickTabs) with clickable thumbnail displays of each open tab. You can also save a group of tabs using the Add Favorites button so that you can open them all again quickly.



**Favorites Center** - On the second bar of the new IE 7 interface, in the upper left, Microsoft places its new Favorites Center, accessible via the star icon and a new Add to Favorites icon. The Favorites Center replaces the Favorites sidebar and includes tabs for RSS feeds and History. In the Add to Favorites drop-down menu, you can add a Favorite Tab Group as well as Organize your favorites.



**Search Box** – The new IE 7 has a built-in Internet search box in the top corner of the interface. When you upgrade to IE 7 you will be asked if you want to use the default Windows Live Search engine or if you want to pick your own search engine. In any case, you can always change your default search engine if you don't do it during installation/upgrade. You can select a different search engine by clicking the drop-down arrow and selecting Find More Providers. You can change your default by clicking Change Search Defaults. This is also where you will locate the Find on this Page option. After you have set your searching defaults, simply type what you are searching for in the box and click the magnifying glass button or the enter key on your keyboard. Use the Alt+Enter key to display your search results in a new tab.



Built in Search Engine Options and Find on this Page Options

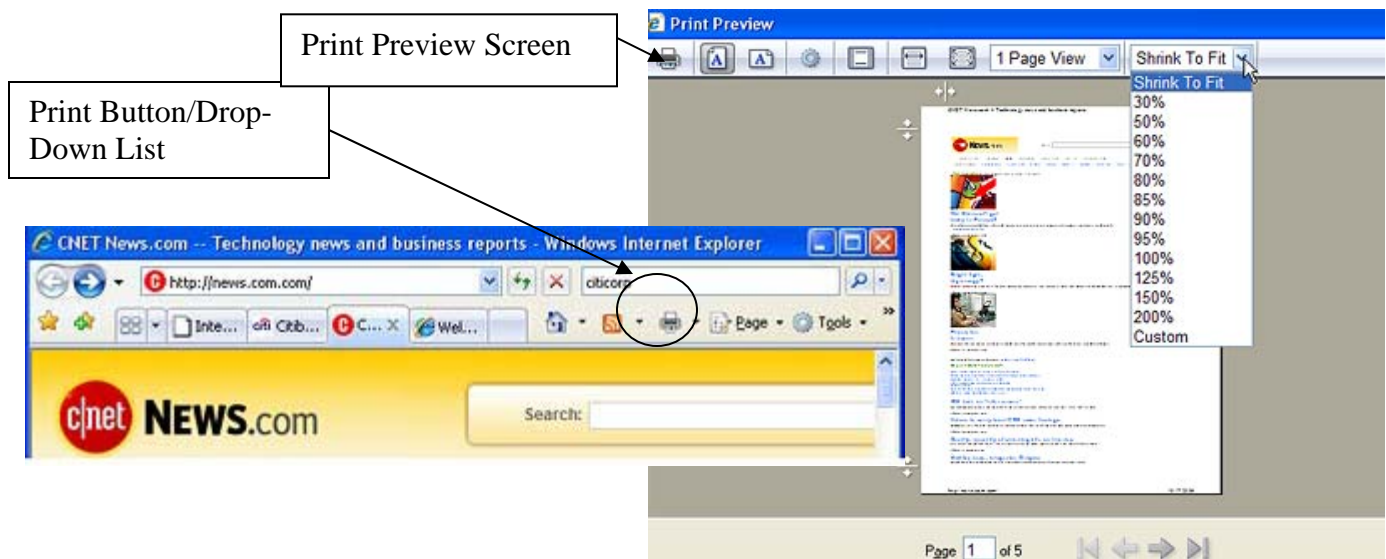
**Tools/Page Menus** - The **Tools** button appears to be IE 7's catch-all. From the drop-down menu, you can clear cache/history/cookies, access Internet Options, configure antiphishing, set pop-up blocking, manage add-ons, turn on or off menus & toolbars, or choose from among other options. The **Page** button contains the commands for cut/copy/paste, save as, send page, zoom, and text size options.



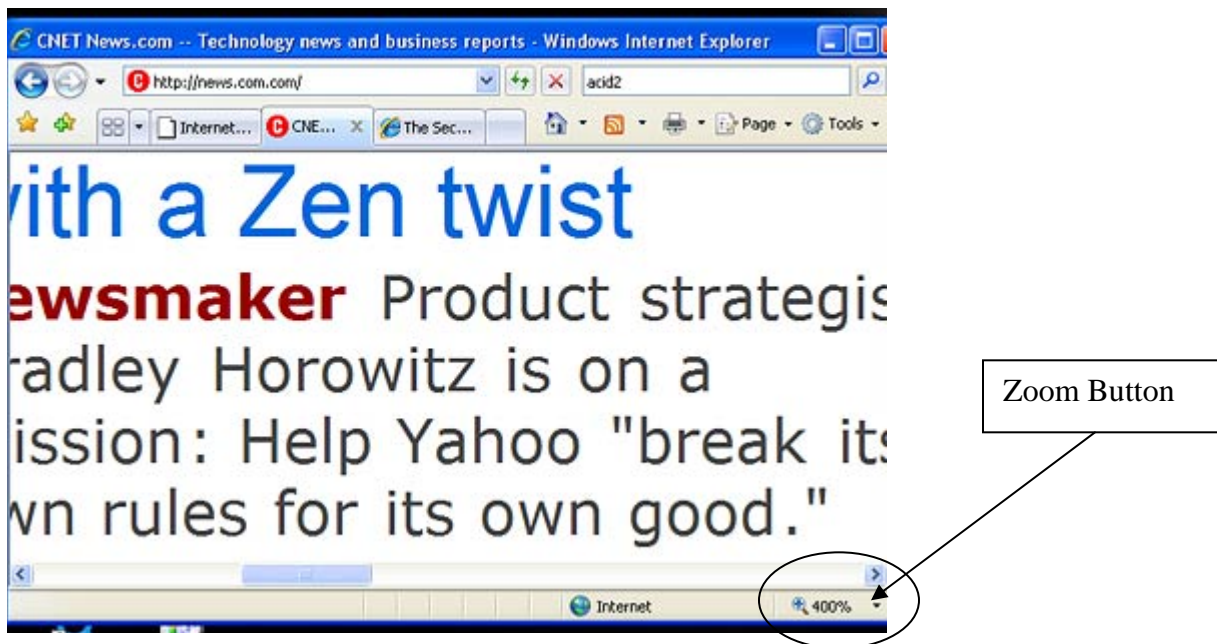
Tools Button/Menu

Page Button/Menu

**Printing** - Printing within IE 7 has also been enhanced with improved Print Preview (available from the Print Drop-Down menu) features including: Portrait & Landscape buttons, Page Setup, and View & Zoom buttons. Web pages can now be printed larger or smaller on the page as needed.



**Zoom/ClearType** - IE 7 includes new zoom technology and Clear-type page technology (for LCD flat-panel monitors). Clear-type can be turned off and/or adjusted if your screen is not displaying clearly in IE 7.



**Security** - Security enhancements within IE 7 include increased malware/spyware protection, increased default Internet security level (medium-high), a new layer of certificate authentication, and antiphishing technology. IE 7 includes Microsoft's new antiphishing technology, designed

to prevent users from providing personal data to fraudulent Web sites. This technology checks websites to verify that they are real websites and not fake versions designed to look like the real ones that collect your personal data without you knowing.

**More Help Available** – More help is available for using the new IE 7. While in IE 7, click the Question Mark/Help Button (next to the Tools Button) and select one of the following:

- Contents and Index – for detailed information
- Internet Explorer Tour – for a visual tour of new features/functions